

Subject Information

Patient Name: GThs, Gerry

Date of Birth: 01/17/1953

Age: 58.93

Gender: Male

Handedness: Right

EEG ID: DeyMed R1 598

Date of Test: 12/23/2011

Technician: Alison Ooms

Eyes Condition: Eyes Closed

Doctor:

Medication: None

Comments: Family hx; see recording sheet.

Technical Information

Record Length: 10:26

Edit Length: 02:53

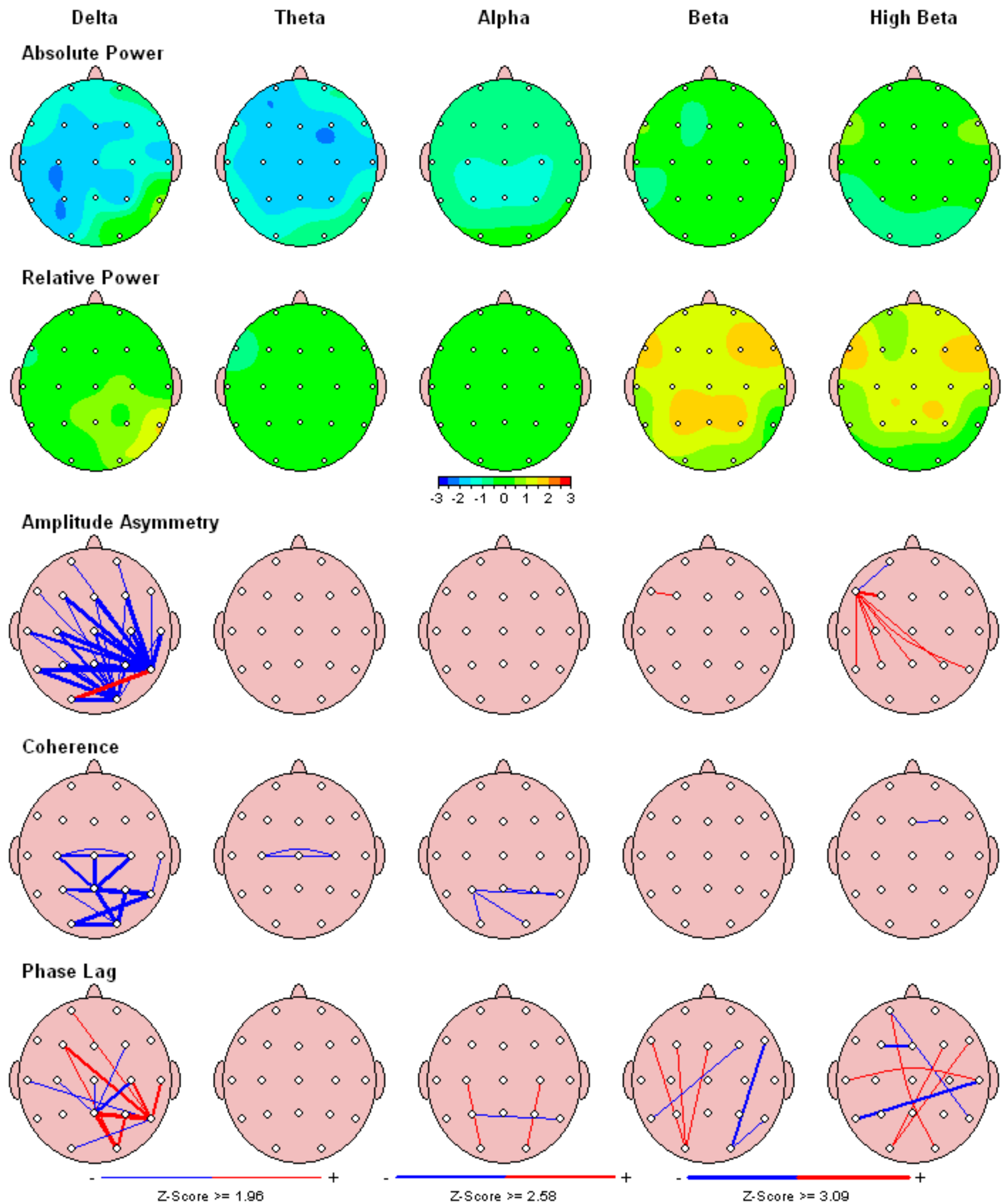
Reliability:

	Split Half	Test Retest
Average	0.98	0.96
FP1	0.97	0.98
FP2	0.98	0.93
F7	0.98	0.97
F3	0.96	0.95
Fz	0.99	0.99
F4	0.99	0.94
F8	0.99	0.94
T3	0.99	0.97
C3	0.98	0.93
Cz	0.99	0.99
C4	0.99	0.96
T4	1.00	0.96
T5	0.98	1.00
P3	0.98	0.99
Pz	0.97	0.93
P4	0.98	0.95
T6	0.99	1.00
O1	0.98	0.98
O2	0.98	0.91

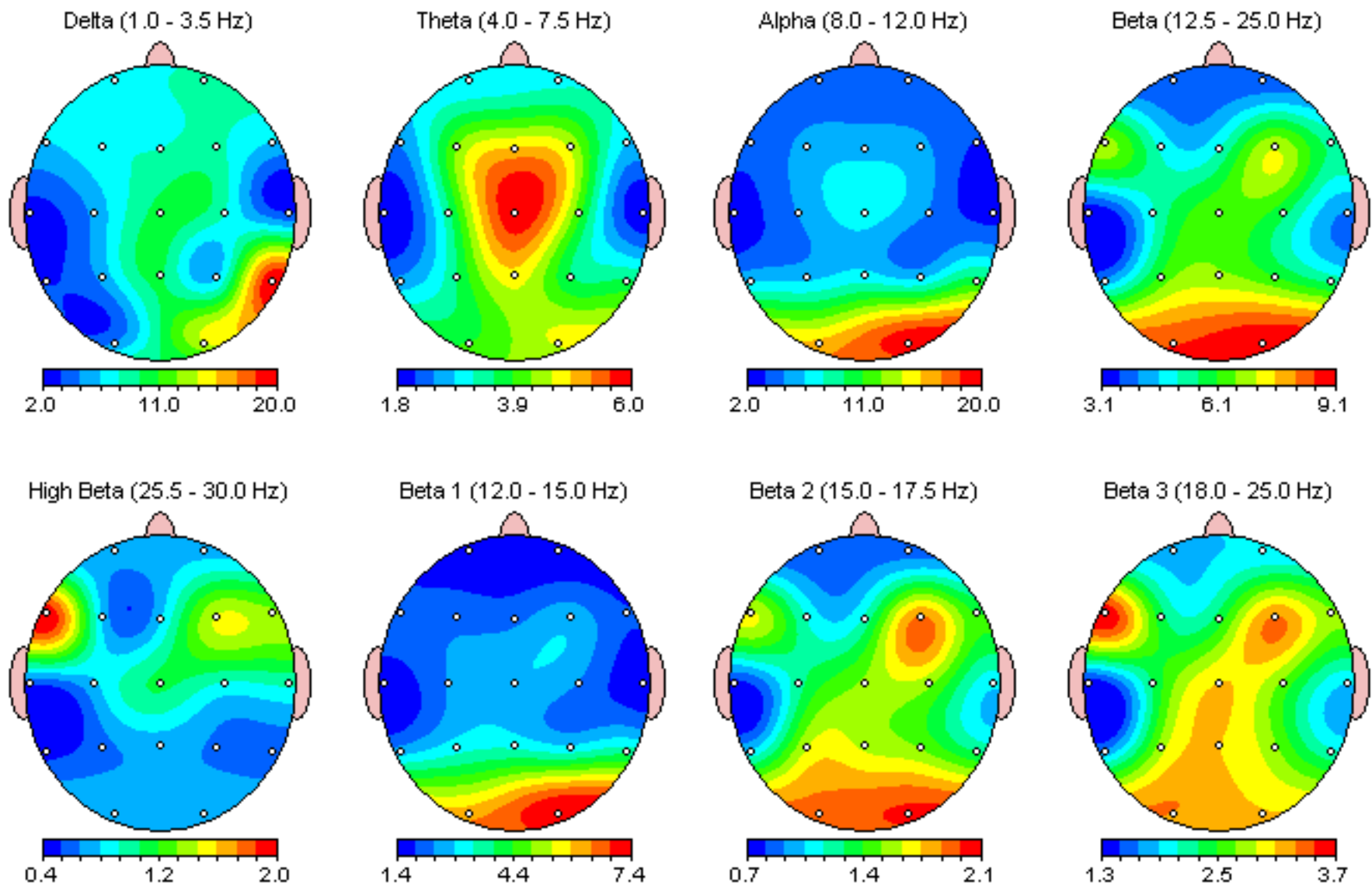
Sampling Rate: 128

Collection Hardware: Deymed

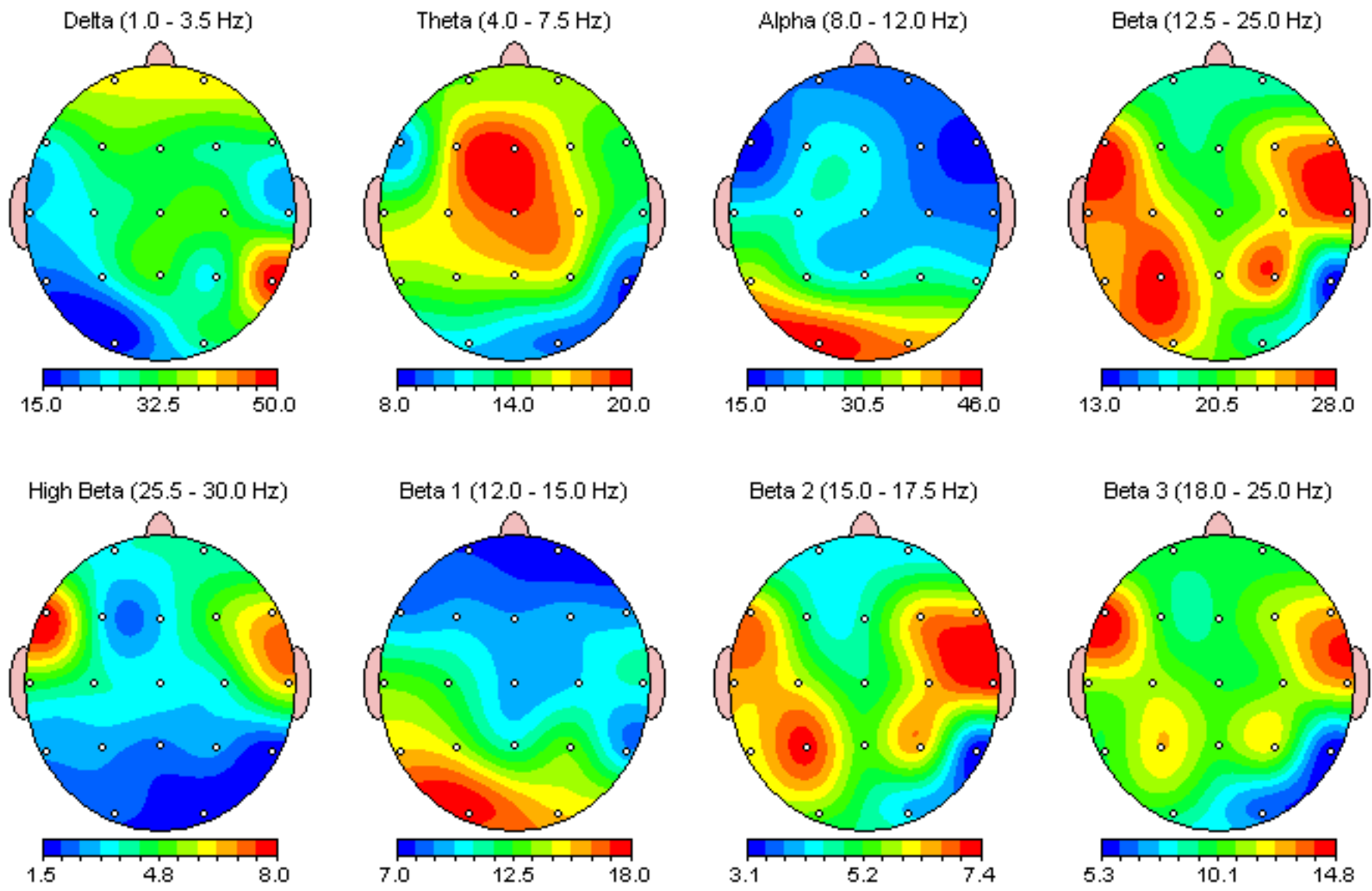
Z Scored FFT Summary Information



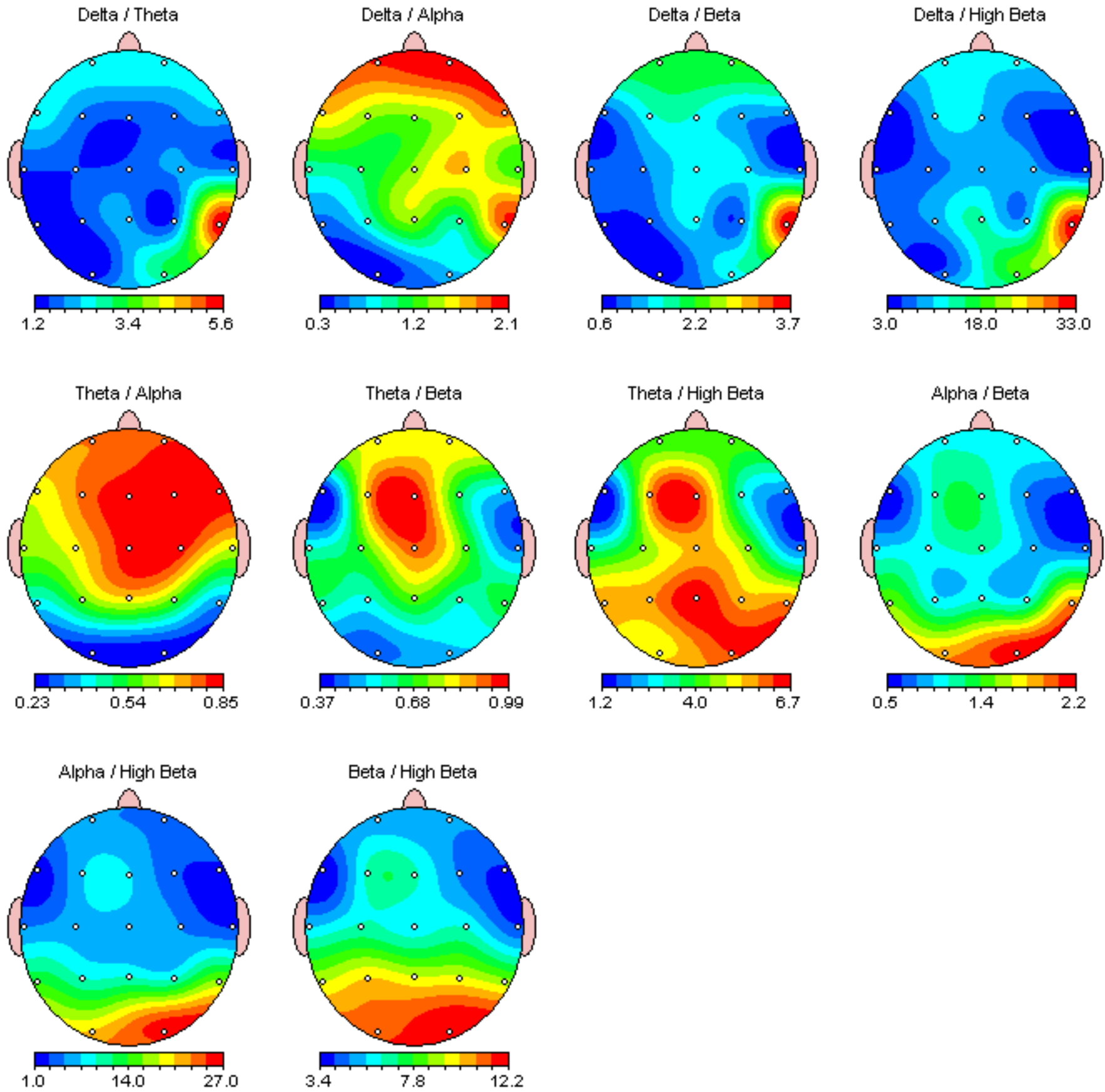
FFT Absolute Power (uV Sq)



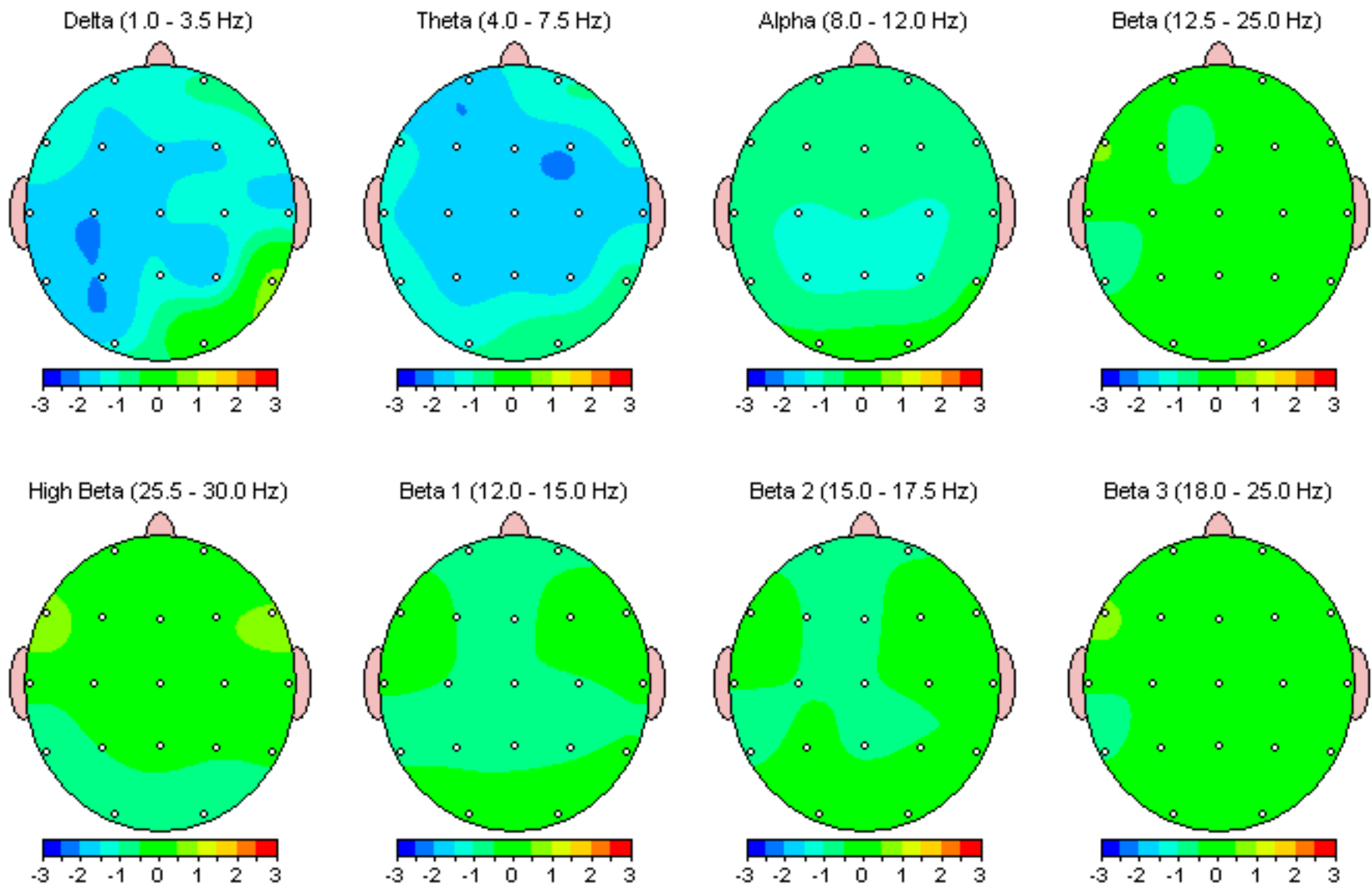
FFT Relative Power (%)



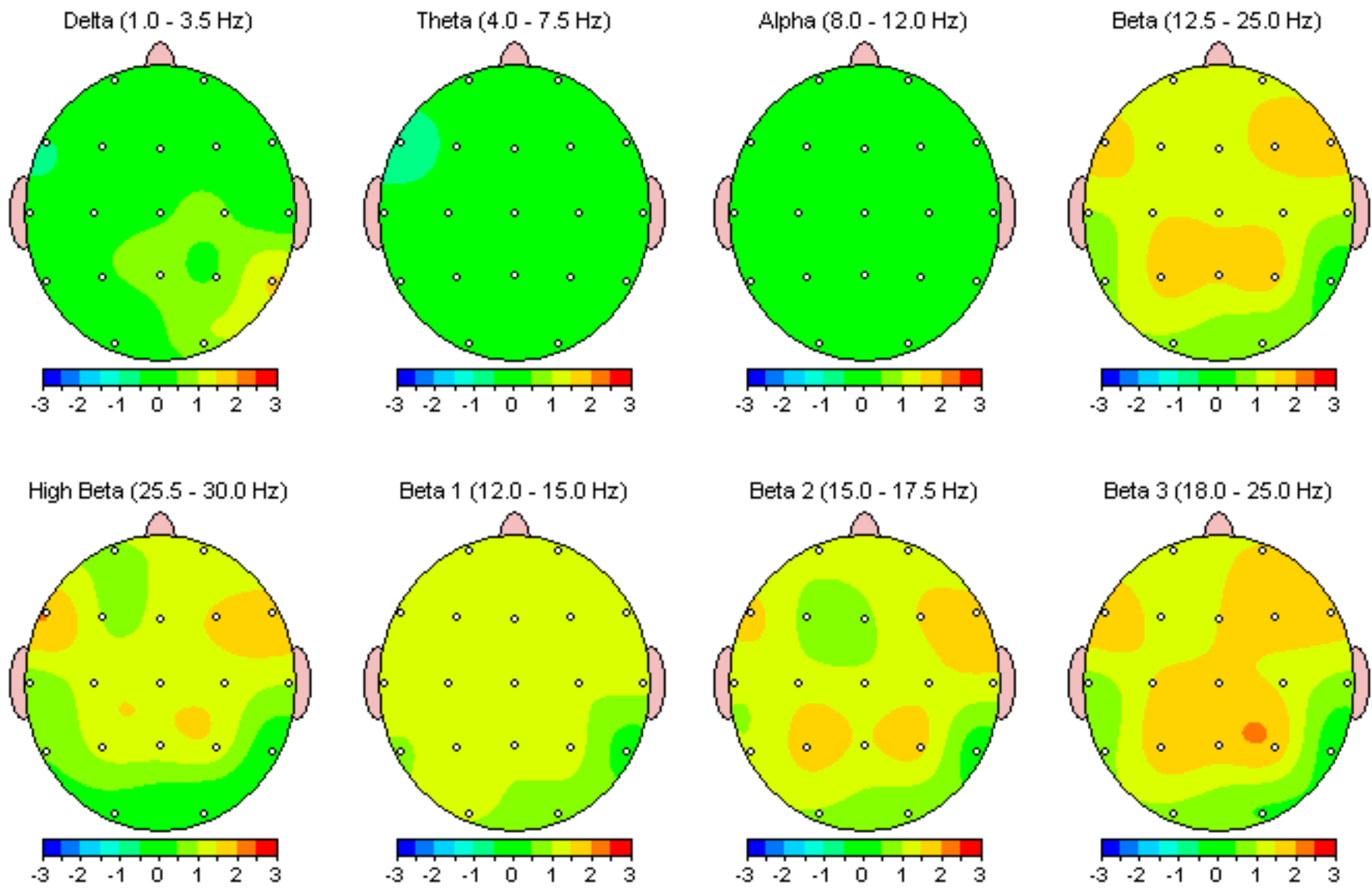
FFT Power Ratio



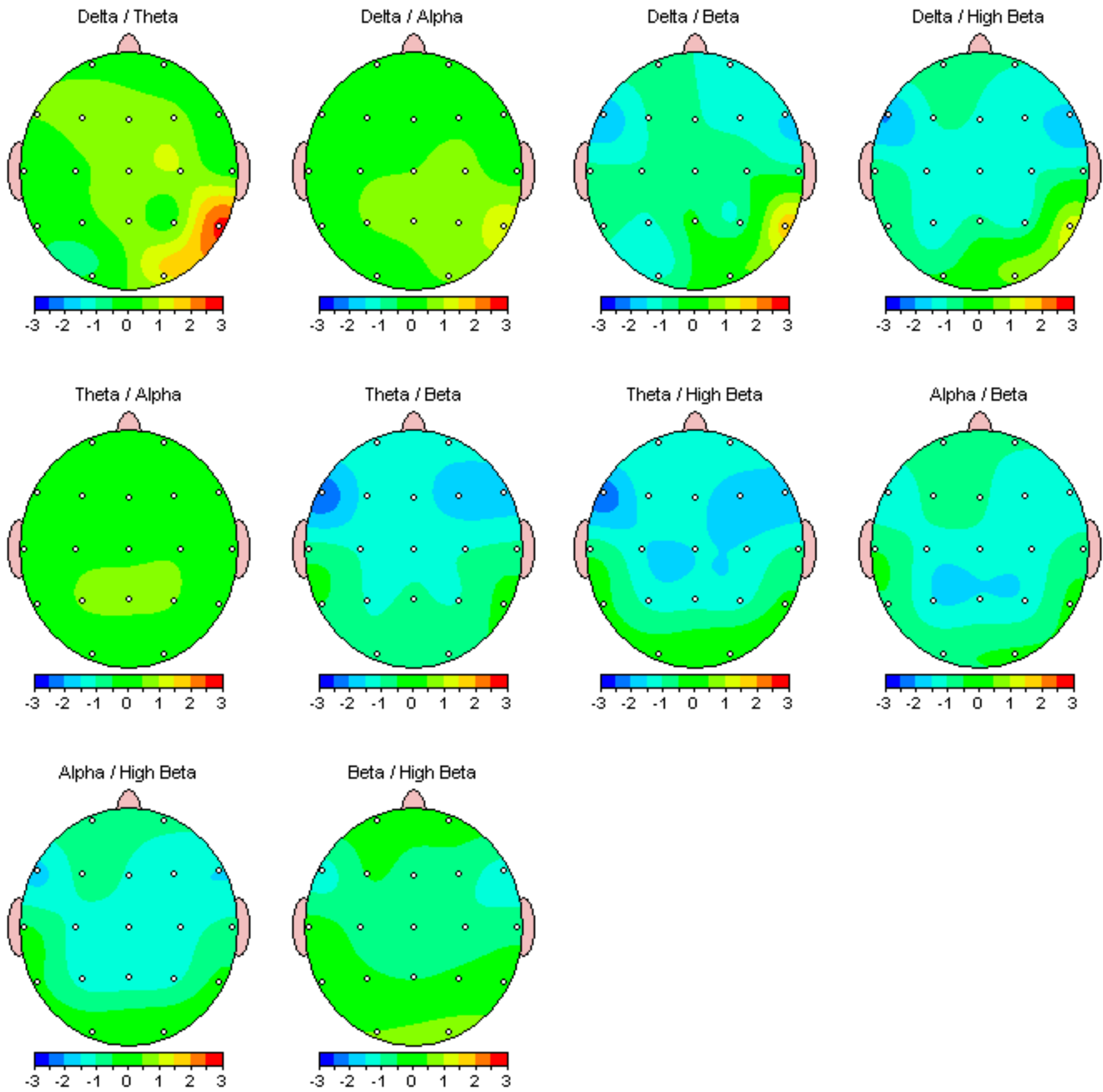
Z Scored FFT Absolute Power



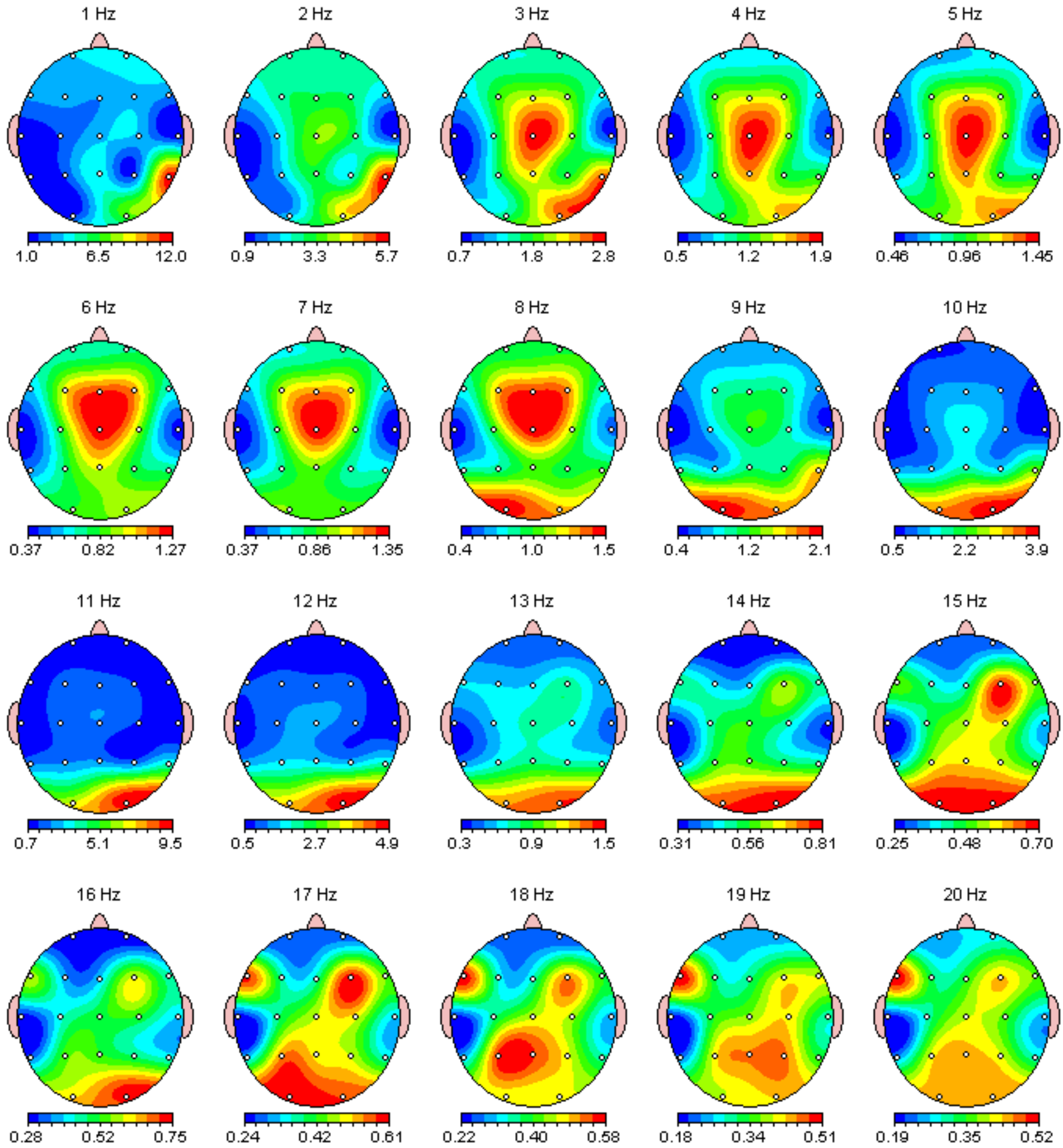
Z Scored FFT Relative Power



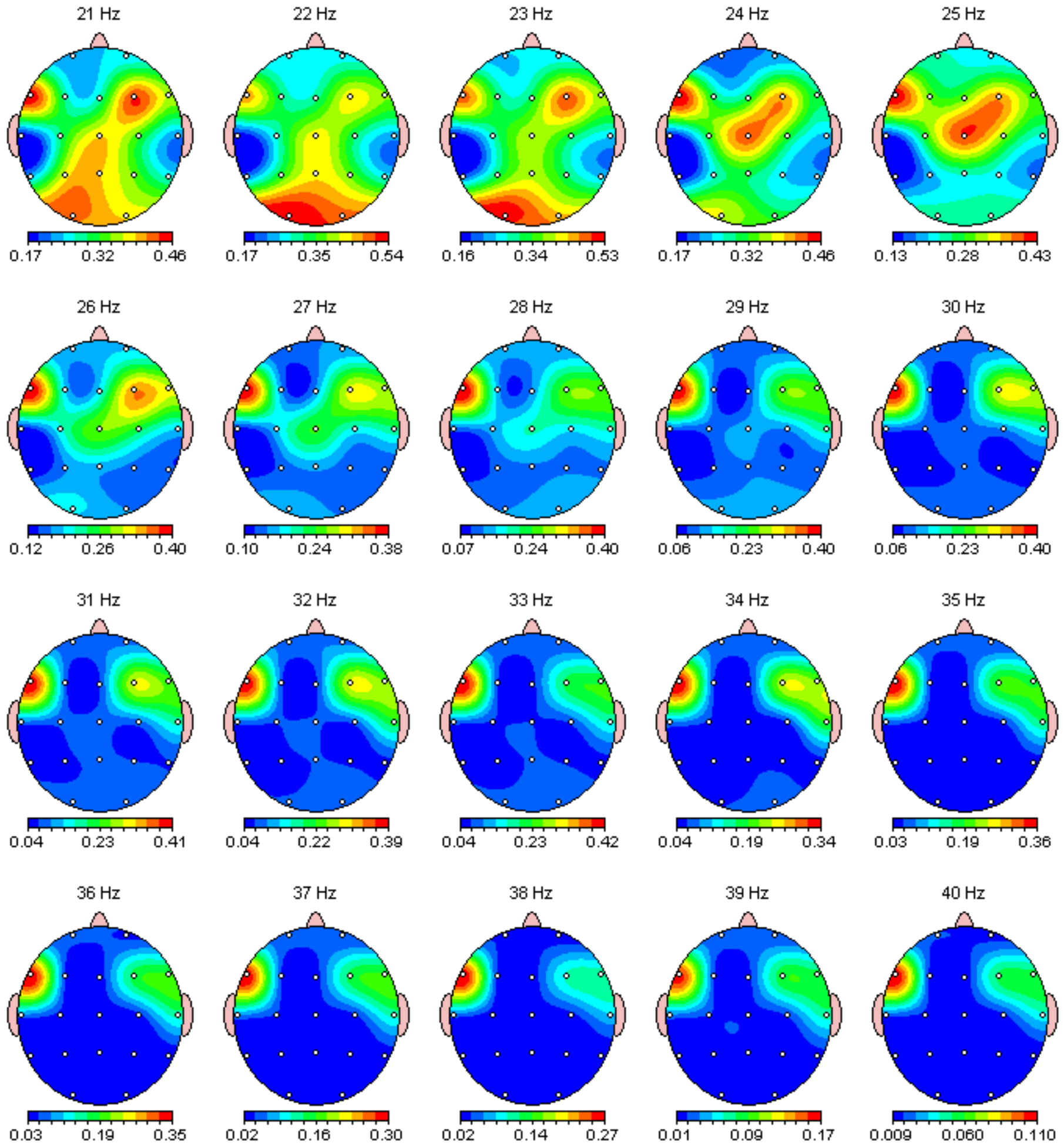
Z Scored FFT Power Ratio



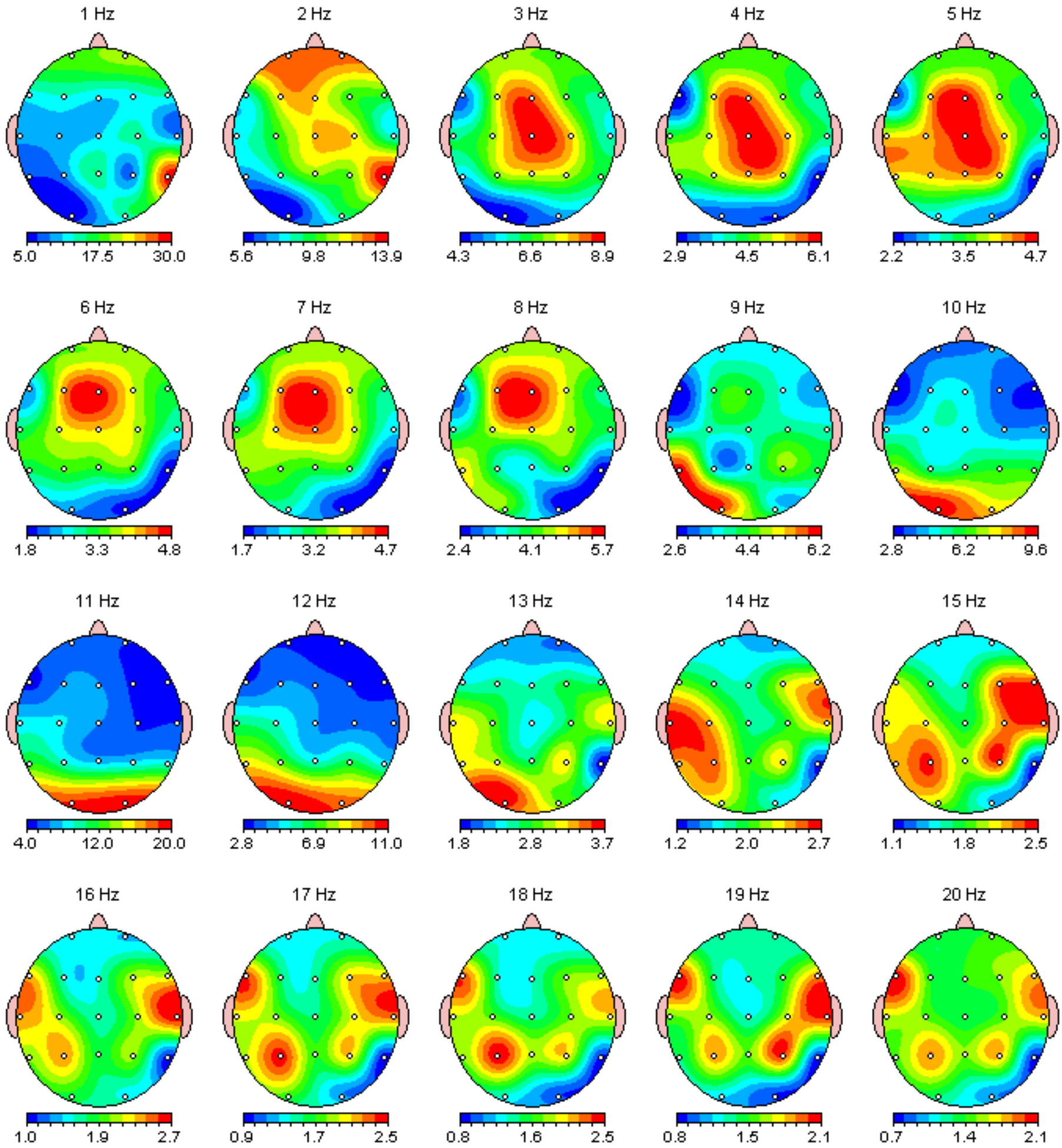
FFT Absolute Power (uV Sq)



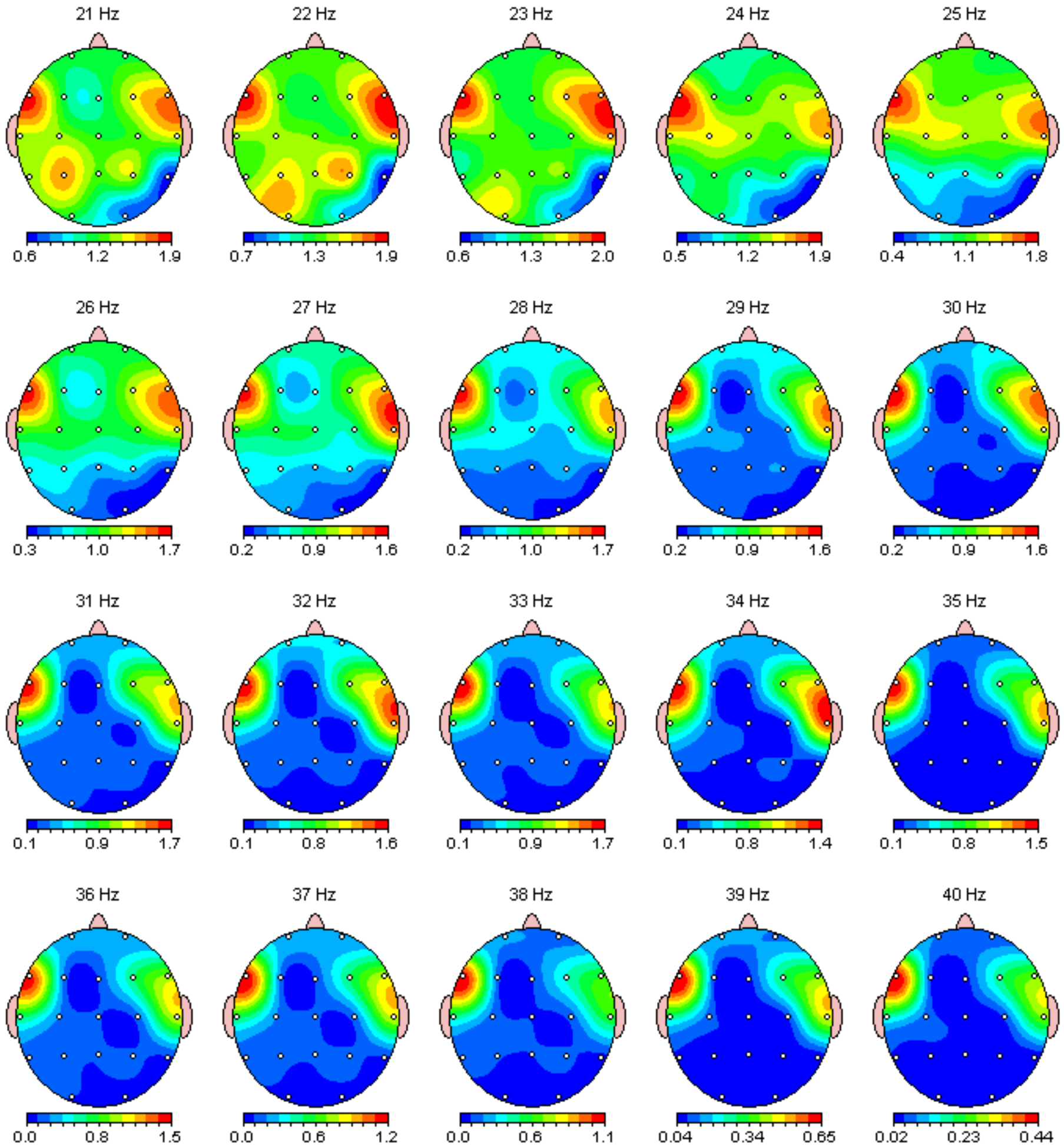
FFT Absolute Power (uV Sq)



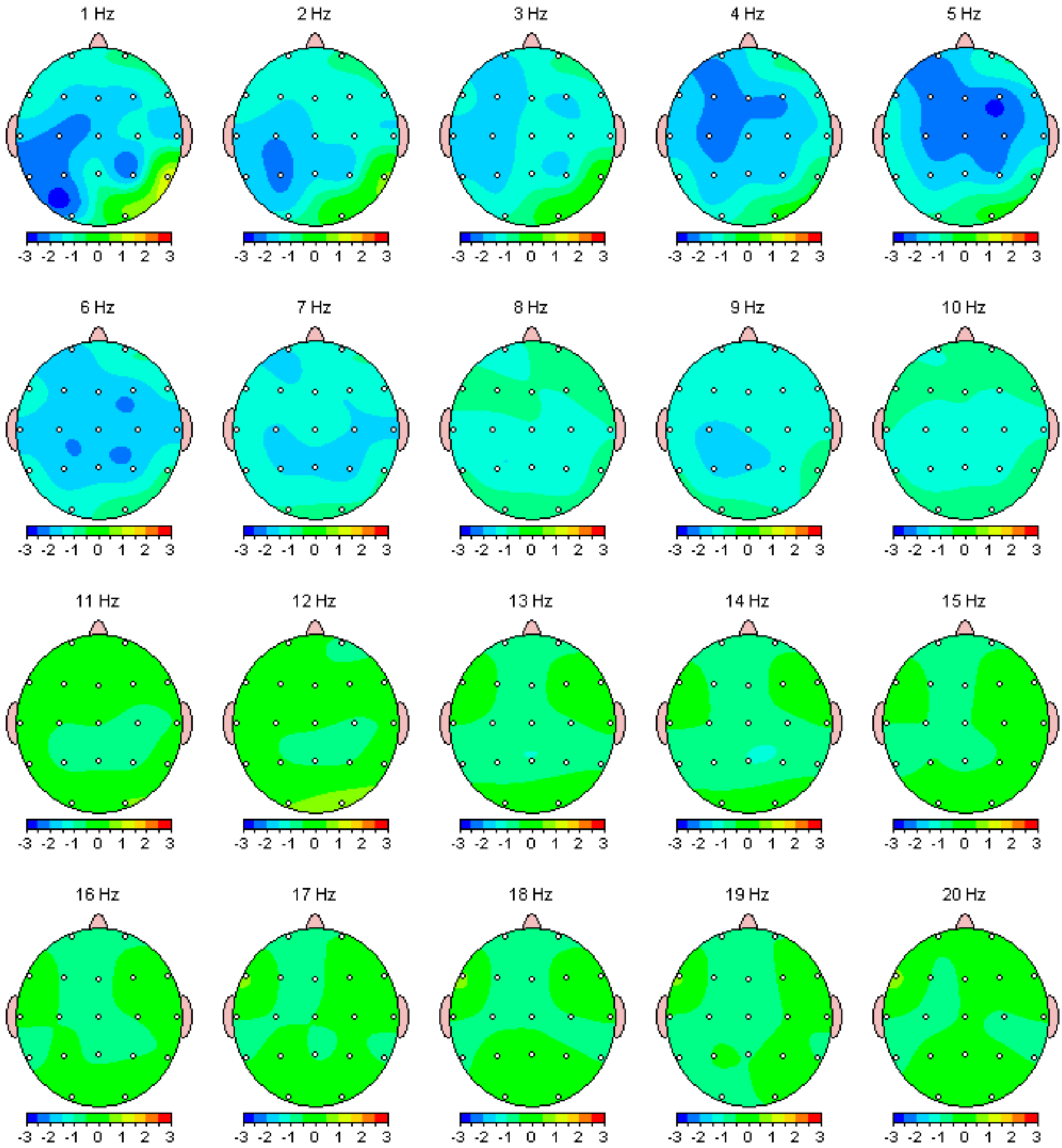
FFT Relative Power (%)



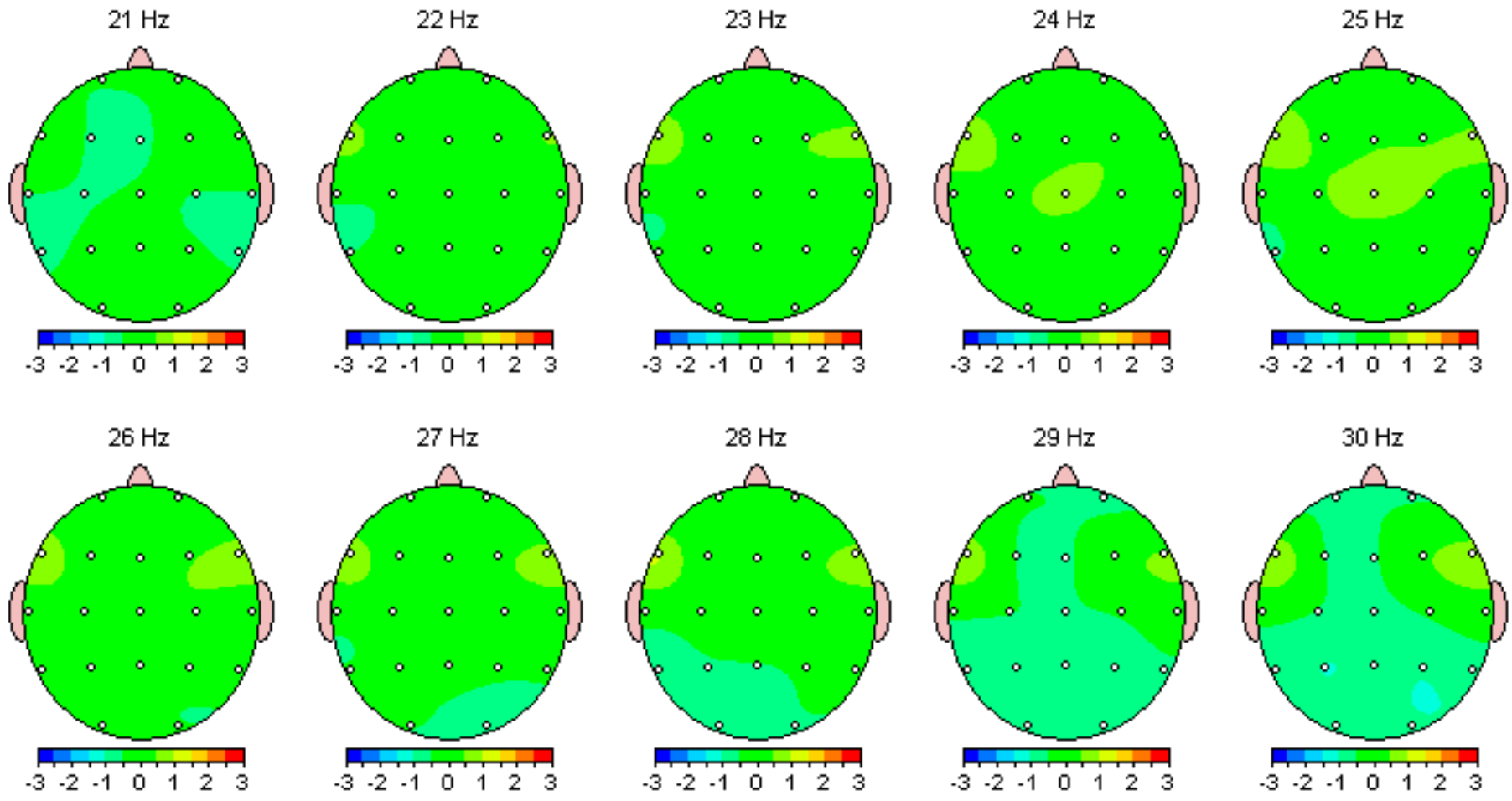
FFT Relative Power (%)



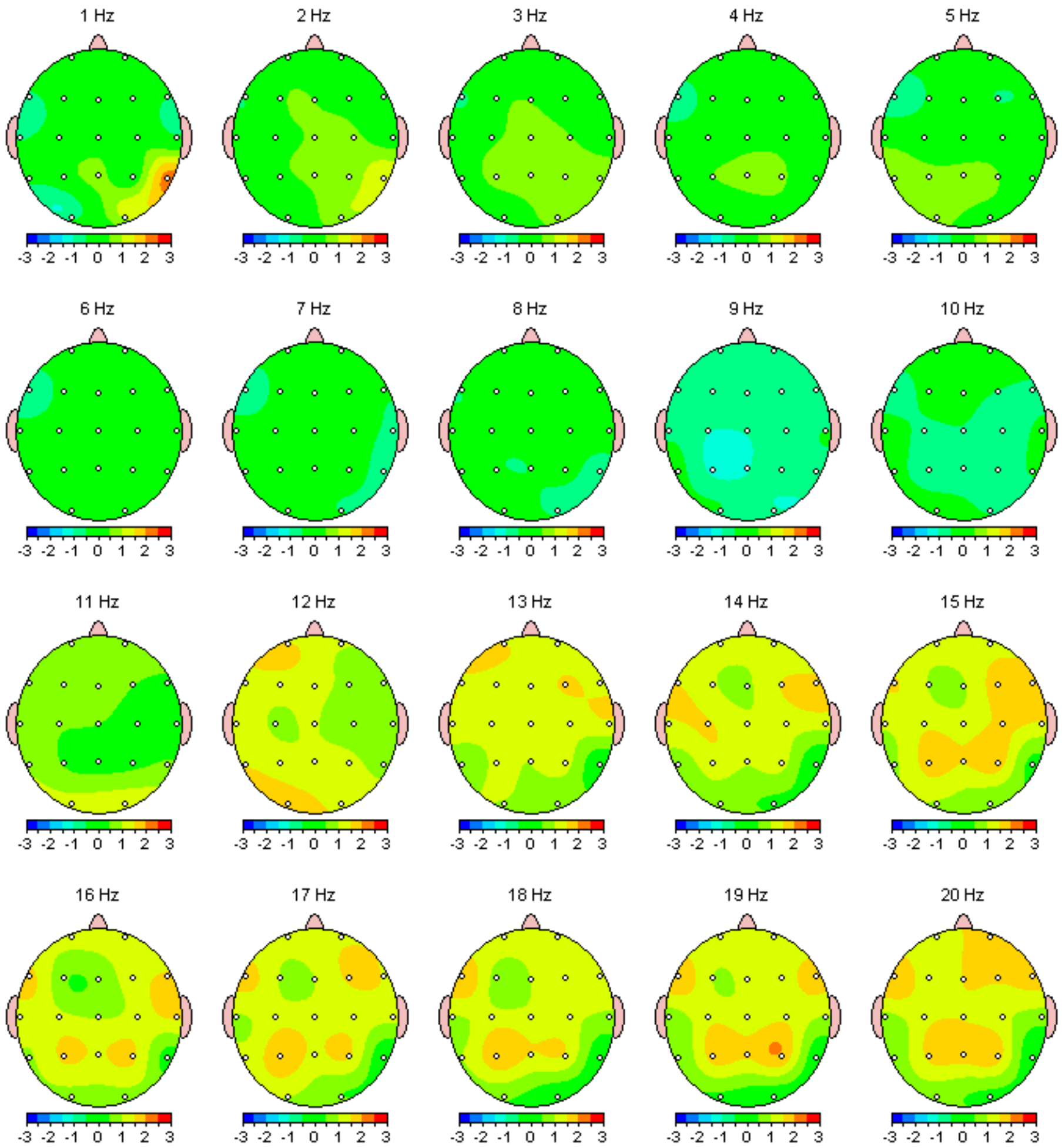
Z Scored FFT Absolute Power



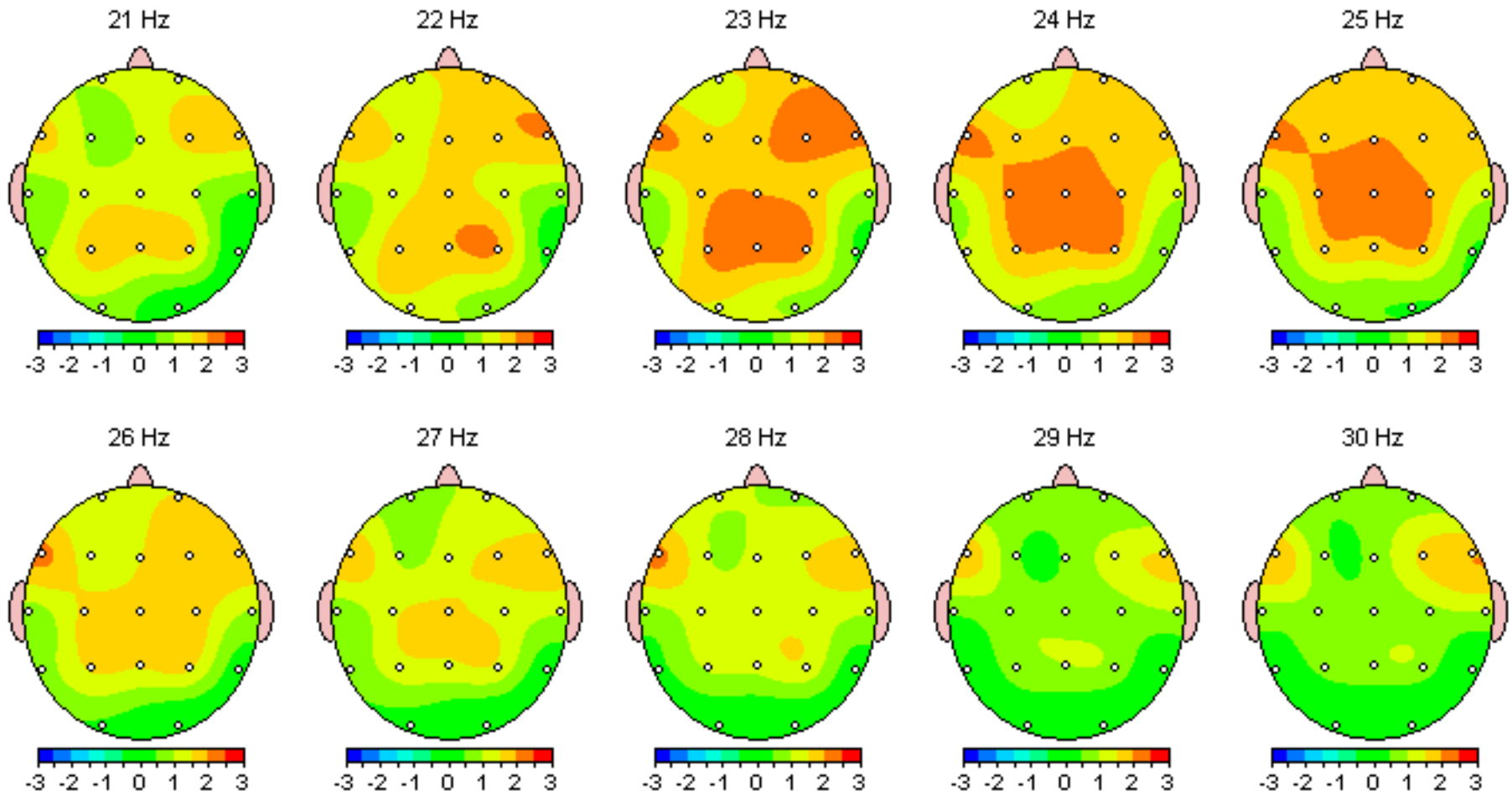
Z Scored FFT Absolute Power



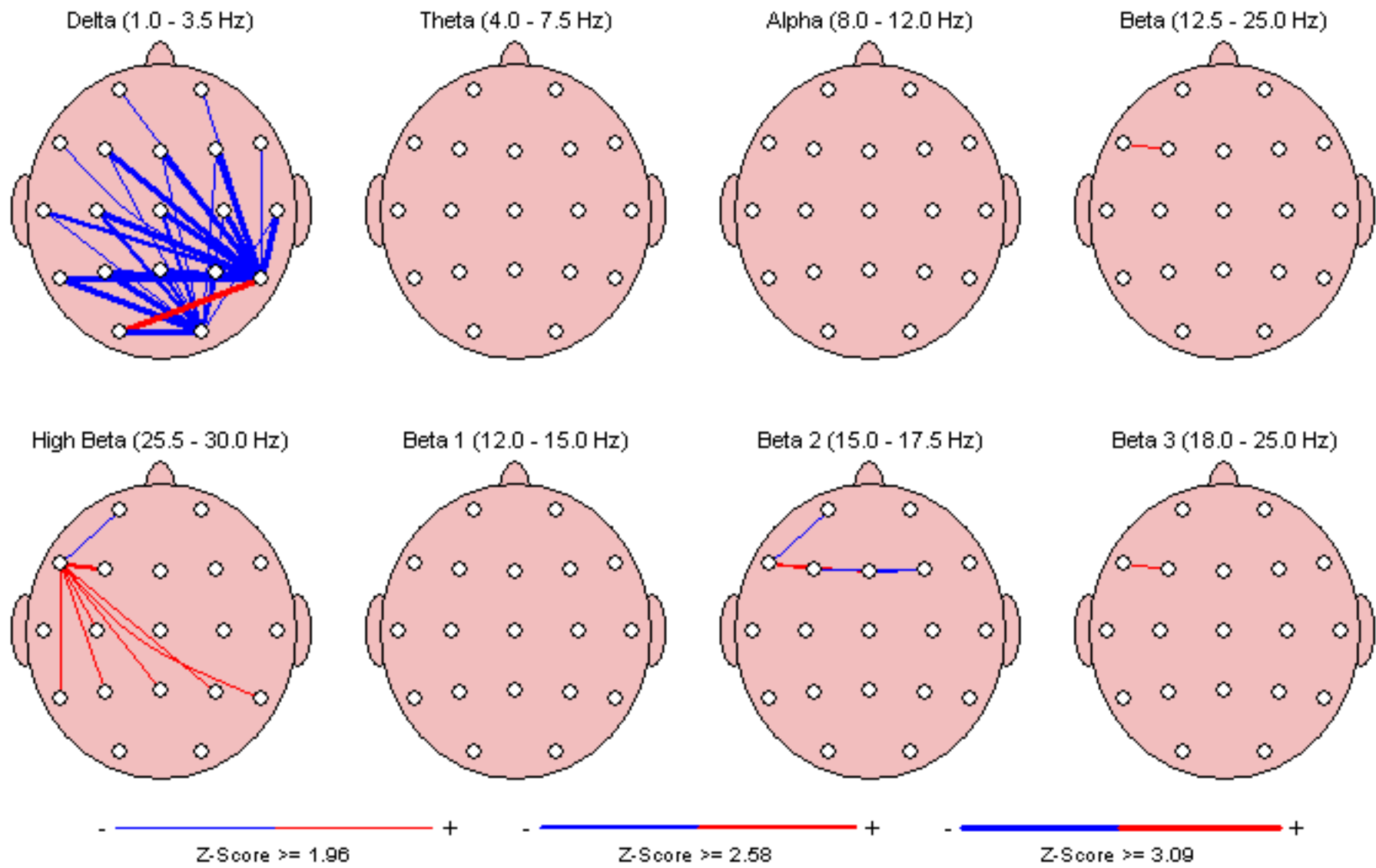
Z Scored FFT Relative Power



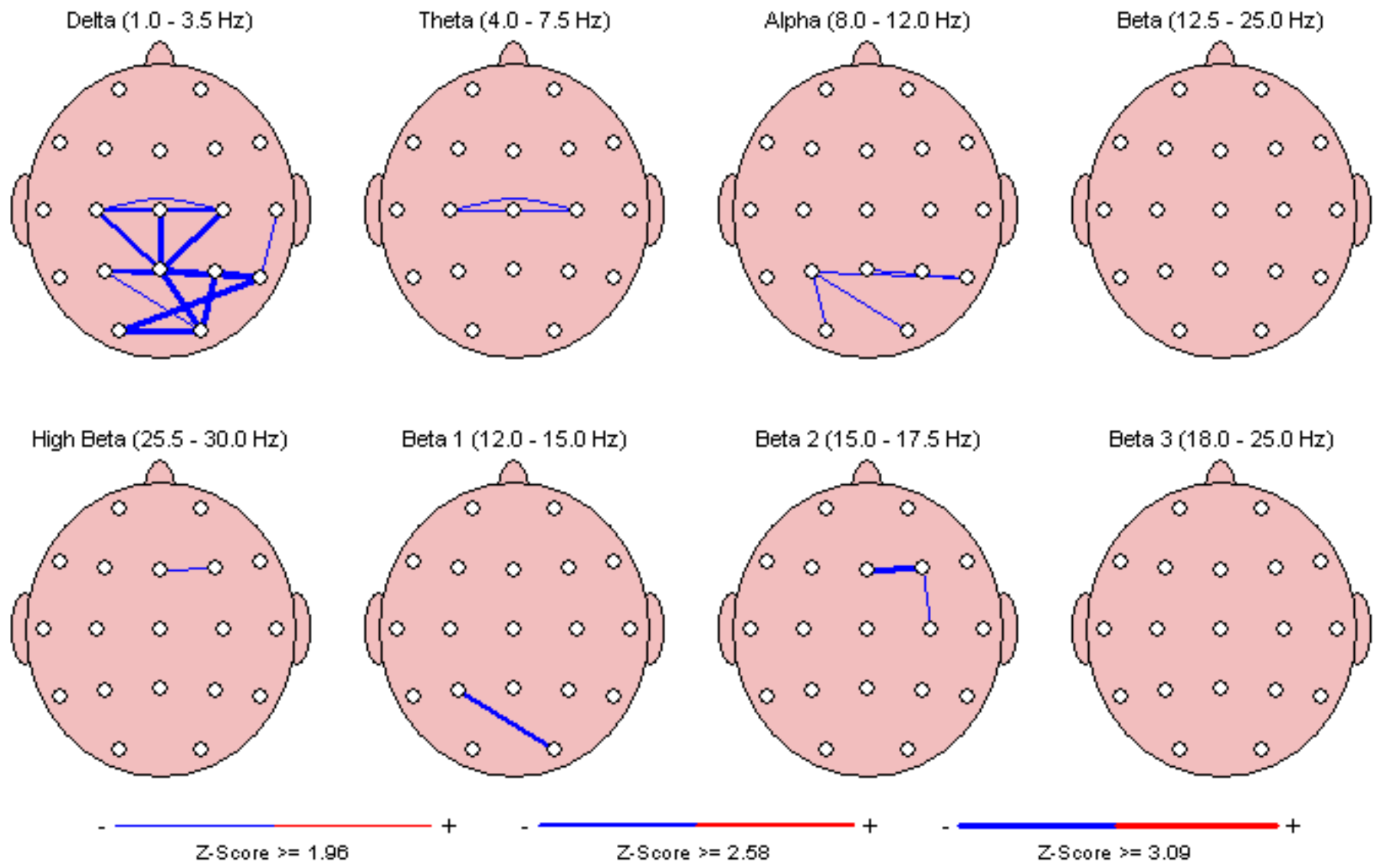
Z Scored FFT Relative Power



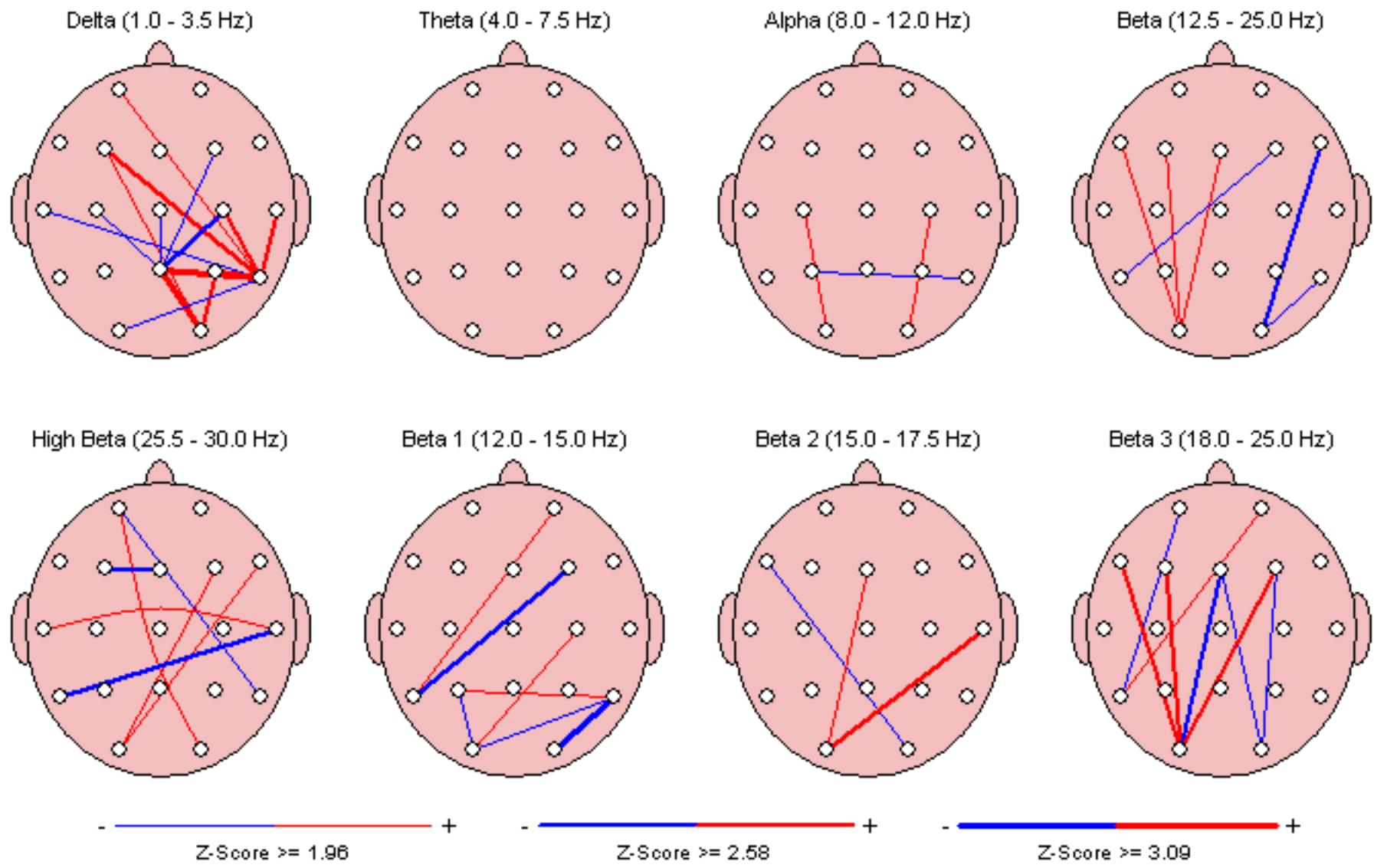
Z Scored FFT Amplitude Asymmetry



Z Scored FFT Coherence



Z Scored FFT Phase Lag



Peak Frequency (Hz)

Intrahemispheric: LEFT

	DELTA	THETA	ALPHA	BETA	HIGH BETA	BETA 1	BETA 2	BETA 3
FP1 - LE	1.95	5.64	10.07	18.01	27.44	13.15	16.24	21.42
F7 - LE	1.97	5.67	10.22	18.38	27.72	13.25	16.31	21.34
F3 - LE	2.10	5.66	10.08	17.87	27.30	13.12	16.22	21.47
T3 - LE	2.11	5.59	10.43	17.51	27.56	13.09	16.24	21.26
C3 - LE	2.17	5.64	10.29	17.74	27.31	13.11	16.20	21.39
T5 - LE	2.18	5.62	10.46	17.21	27.38	12.89	16.22	21.11
P3 - LE	2.17	5.56	10.52	17.51	27.32	13.00	16.25	20.96
O1 - LE	2.21	5.64	10.65	17.01	27.41	12.79	16.20	21.40

Intrahemispheric: RIGHT

	DELTA	THETA	ALPHA	BETA	HIGH BETA	BETA 1	BETA 2	BETA 3
FP2 - LE	1.93	5.66	10.01	18.13	27.43	13.21	16.24	21.41
F4 - LE	2.08	5.65	10.01	17.92	27.56	13.31	16.21	21.39
F8 - LE	2.00	5.62	10.01	18.10	27.66	13.40	16.20	21.32
C4 - LE	2.08	5.58	10.07	17.76	27.30	13.23	16.20	21.23
T4 - LE	2.11	5.54	10.14	17.87	27.67	13.28	16.24	21.31
P4 - LE	2.19	5.53	10.36	17.45	27.41	13.05	16.21	21.04
T6 - LE	1.78	5.51	10.50	17.02	27.46	12.88	16.17	21.13
O2 - LE	1.92	5.50	10.82	16.62	27.50	12.72	16.19	21.28

Intrahemispheric: CENTER

	DELTA	THETA	ALPHA	BETA	HIGH BETA	BETA 1	BETA 2	BETA 3
Fz - LE	2.18	5.66	10.04	17.84	27.23	13.13	16.22	21.43
Cz - LE	2.19	5.59	10.14	17.94	27.21	13.12	16.21	21.48
Pz - LE	2.05	5.49	10.37	17.59	27.40	13.06	16.19	21.10

Z Scored Peak Frequency

Intrahemispheric: LEFT

	DELTA	THETA	ALPHA	BETA	HIGH BETA	BETA 1	BETA 2	BETA 3
FP1 - LE	-0.14	-0.20	0.83	0.54	-1.16	-0.42	0.33	0.92
F7 - LE	-0.01	0.04	0.99	1.05	0.09	0.07	0.99	1.01
F3 - LE	0.41	-0.17	0.76	0.67	-1.31	-0.40	0.06	1.48
T3 - LE	0.87	-0.22	1.18	0.08	-0.39	-0.38	0.10	0.55
C3 - LE	1.00	-0.29	0.88	0.80	-1.17	-0.08	-0.20	1.53
T5 - LE	1.08	-0.52	1.03	0.16	-1.14	-0.96	0.30	0.51
P3 - LE	1.15	-0.63	1.04	0.88	-1.39	-0.25	0.48	0.40
O1 - LE	1.52	-0.41	1.14	-0.07	-1.12	-1.07	0.03	0.97

Intrahemispheric: RIGHT

	DELTA	THETA	ALPHA	BETA	HIGH BETA	BETA 1	BETA 2	BETA 3
FP2 - LE	-0.01	-0.13	0.69	0.96	-1.25	-0.09	0.45	1.22
F4 - LE	0.29	-0.24	0.63	0.80	-0.53	0.30	-0.22	1.19
F8 - LE	0.38	-0.10	0.68	0.91	-0.06	0.70	-0.45	1.10
C4 - LE	0.05	-0.50	0.49	0.75	-1.52	0.29	-0.40	1.14
T4 - LE	0.72	-0.38	0.70	0.18	-0.15	0.20	-0.09	0.65
P4 - LE	1.02	-0.77	0.74	0.81	-0.89	-0.04	0.16	0.62
T6 - LE	-2.21	-0.95	0.91	0.09	-1.03	-0.75	-0.32	0.61
O2 - LE	-0.79	-0.91	1.34	-0.41	-1.27	-1.29	-0.18	0.74

Intrahemispheric: CENTER

	DELTA	THETA	ALPHA	BETA	HIGH BETA	BETA 1	BETA 2	BETA 3
Fz - LE	0.92	-0.18	0.72	0.96	-1.63	-0.37	0.11	1.34
Cz - LE	1.13	-0.43	0.75	1.35	-1.73	-0.11	-0.00	1.60
Pz - LE	-0.05	-0.88	0.80	1.20	-1.03	-0.05	0.05	0.75

FFT Amplitude Asymmetry

Intrahemispheric: LEFT

	DELTA	THETA	ALPHA	BETA
FP1 F7	18.58	15.15	2.19	-57.78
FP1 F3	-0.39	-37.02	-34.77	-26.94
FP1 T3	92.07	48.97	28.39	18.45
FP1 C3	31.55	-18.37	-27.78	-31.35
FP1 T5	77.57	11.91	-47.11	-14.31
FP1 P3	29.83	-19.22	-44.45	-51.45
FP1 O1	37.76	-27.68	-120.75	-78.22
F7 F3	-18.97	-51.45	-36.89	32.09
F7 T3	76.78	34.45	26.24	74.25
F7 C3	13.17	-33.29	-29.93	27.68
F7 T5	61.19	-3.26	-49.18	44.39
F7 P3	11.41	-34.13	-46.53	6.84
F7 O1	19.52	-42.38	-122.13	-23.04
F3 T3	92.38	82.25	61.64	44.83
F3 C3	31.94	18.97	7.16	-4.51
F3 T5	77.90	48.39	-12.87	12.75
F3 P3	30.21	18.11	-10.07	-25.39
F3 O1	38.14	9.58	-96.06	-54.13
T3 C3	-65.26	-65.86	-55.08	-49.09
T3 T5	-17.66	-37.61	-73.06	-32.55
T3 P3	-66.83	-66.62	-70.61	-68.28
T3 O1	-59.48	-74.13	-137.37	-93.30
C3 T5	49.01	30.11	-19.98	17.23
C3 P3	-1.77	-0.86	-17.20	-20.94
C3 O1	6.40	-9.43	-101.48	-49.93
T5 P3	-50.67	-30.95	2.81	-37.83
T5 O1	-42.95	-39.26	-85.85	-65.75
P3 O1	8.16	-8.57	-88.12	-29.77

Intrahemispheric: RIGHT

	DELTA	THETA	ALPHA	BETA
FP2 F4	-2.00	-37.07	-32.04	-59.31
FP2 F8	26.77	9.60	14.14	-35.97
FP2 C4	0.75	-25.56	-21.90	-40.50
FP2 T4	78.91	50.83	30.81	-6.58
FP2 P4	26.36	-13.88	-47.65	-47.13
FP2 T6	-83.36	-13.58	-90.07	-35.30
FP2 O2	-51.03	-38.62	-133.05	-81.04
F4 F8	28.73	46.26	45.66	24.65
F4 C4	2.75	11.79	10.32	20.01
F4 T4	80.59	83.95	61.33	53.25
F4 P4	28.32	23.49	-16.23	13.09
F4 T6	-81.70	23.79	-62.54	25.33
F4 O2	-49.16	-1.61	-113.06	-24.70
F8 C4	-26.03	-34.95	-35.77	-4.70
F8 T4	55.04	41.74	16.85	29.57
F8 P4	-0.41	-23.41	-60.77	-11.65
F8 T6	-104.31	-23.11	-101.00	0.69
F8 O2	-75.23	-47.78	-140.58	-48.61
C4 T4	78.27	73.99	51.84	34.15
C4 P4	25.62	11.78	-26.44	-6.96
C4 T6	-83.98	12.09	-71.70	5.39
C4 O2	-51.73	-13.39	-119.88	-44.16
T4 P4	-55.43	-63.60	-75.68	-40.87
T4 T6	-139.35	-63.32	-113.04	-28.89
T4 O2	-118.05	-85.27	-148.63	-75.46
P4 T6	-104.01	0.30	-47.52	12.34
P4 O2	-74.88	-25.08	-101.49	-37.49
T6 O2	36.17	-25.38	-61.37	-49.26

Interhemispheric: HOMOLOGOUS PAIRS

	DELTA	THETA	ALPHA	BETA
FP1 FP2	-6.01	-5.52	0.49	-1.69
F3 F4	-7.61	-5.58	3.30	-35.35
C3 C4	-36.66	-12.79	6.46	-11.13
P3 P4	-9.53	-0.15	-2.89	2.91

	DELTA	THETA	ALPHA	BETA
F7 F8	2.29	-11.09	12.45	21.34
T3 T4	-22.04	-3.53	2.96	-26.61
T5 T6	-141.59	-30.80	-47.59	-22.93
O1 O2	-89.58	-16.75	-20.08	-5.04

Z Scored FFT Amplitude Asymmetry

Intrahemispheric: LEFT

	DELTA	THETA	ALPHA	BETA
FP1 F7	-0.72	-1.12	-1.34	-1.77
FP1 F3	-0.02	-0.20	-0.33	0.11
FP1 T3	0.37	-0.39	-0.31	0.08
FP1 C3	0.32	-0.02	0.56	0.11
FP1 T5	0.39	-0.41	-0.06	0.29
FP1 P3	0.41	-0.02	0.99	0.03
FP1 O1	0.04	-0.85	-0.69	-0.45
F7 F3	0.61	0.77	0.97	2.16
F7 T3	0.87	0.15	0.40	1.43
F7 C3	0.86	0.68	1.42	1.78
F7 T5	0.79	0.01	0.43	1.69
F7 P3	0.94	0.56	1.73	1.46
F7 O1	0.33	-0.48	-0.29	0.94
F3 T3	0.52	-0.34	-0.17	0.03
F3 C3	0.64	0.19	0.94	0.04
F3 T5	0.52	-0.33	0.11	0.23
F3 P3	0.71	0.16	1.32	-0.05
F3 O1	0.02	-0.88	-0.62	-0.54
T3 C3	-0.01	0.49	1.06	-0.02
T3 T5	0.14	-0.14	0.20	0.18
T3 P3	0.22	0.37	1.21	-0.11
T3 O1	-0.45	-0.66	-0.47	-0.47
C3 T5	0.15	-0.49	-0.51	0.23
C3 P3	0.39	0.02	0.92	-0.11
C3 O1	-0.43	-1.05	-1.01	-0.54
T5 P3	0.09	0.53	1.23	-0.34
T5 O1	-0.73	-0.70	-0.70	-0.82
P3 O1	-0.70	-1.05	-1.47	-0.45

Intrahemispheric: RIGHT

	DELTA	THETA	ALPHA	BETA
FP2 F4	-0.51	-0.50	-0.48	-0.82
FP2 F8	-0.56	-0.67	-0.53	-1.02
FP2 C4	-0.56	-0.46	-0.07	-0.48
FP2 T4	-0.19	-0.35	-0.38	-0.40
FP2 P4	-0.18	-0.33	0.17	-0.35
FP2 T6	-2.00	-0.78	-0.71	-0.38
FP2 O2	-1.40	-1.04	-0.96	-0.73
F4 F8	-0.14	-0.62	-0.41	-0.49
F4 C4	-0.46	-0.09	1.04	0.86
F4 T4	0.32	-0.17	-0.14	0.46
F4 P4	0.68	0.34	1.04	0.79
F4 T6	-3.24	-0.76	-0.47	0.65
F4 O2	-2.12	-1.48	-0.95	-0.14
F8 C4	-0.11	0.52	1.10	0.99
F8 T4	0.40	0.43	0.21	0.92
F8 P4	0.55	0.74	1.02	0.95
F8 T6	-2.38	-0.33	-0.32	1.13
F8 O2	-1.47	-0.75	-0.77	0.18
C4 T4	0.64	-0.17	-1.17	-0.03
C4 P4	1.38	0.48	0.61	0.20
C4 T6	-3.77	-0.79	-1.00	0.07
C4 O2	-2.24	-1.48	-1.28	-0.56
T4 P4	0.27	0.39	0.85	0.11
T4 T6	-3.18	-0.65	-0.40	0.08
T4 O2	-1.97	-1.04	-0.83	-0.45
P4 T6	-4.74	-1.08	-1.57	-0.10
P4 O2	-2.79	-1.58	-1.52	-0.69
T6 O2	1.31	-0.58	-0.55	-0.82

Interhemispheric: HOMOLOGOUS PAIRS

	DELTA	THETA	ALPHA	BETA
FP1 FP2	0.44	0.37	0.44	0.37
F3 F4	-0.31	-0.15	0.52	-1.81
C3 C4	-1.73	-0.44	0.30	-0.24
P3 P4	-0.44	0.07	0.06	0.14

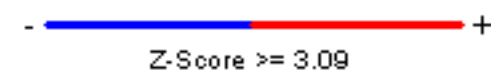
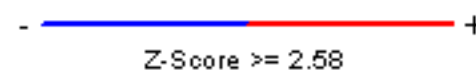
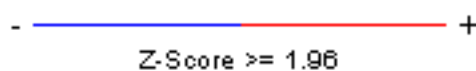
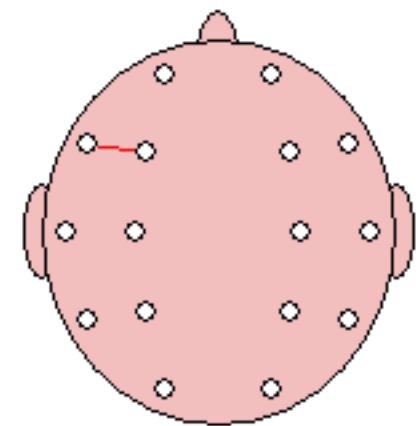
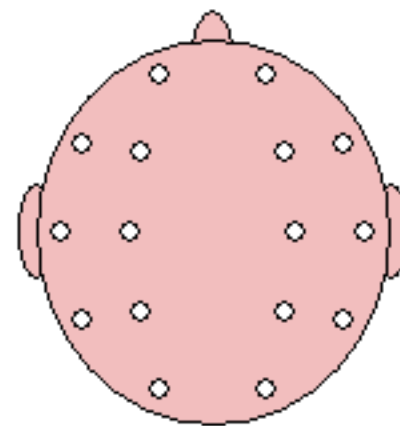
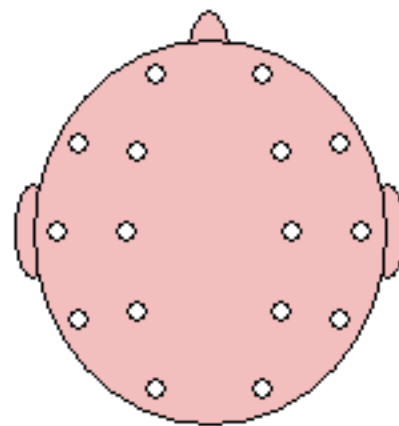
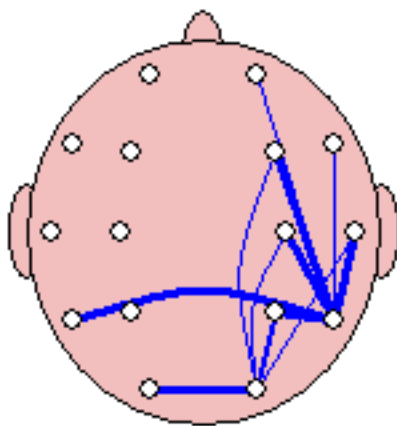
	DELTA	THETA	ALPHA	BETA
F7 F8	0.19	-0.21	0.54	0.54
T3 T4	-0.32	0.02	0.21	-0.19
T5 T6	-3.26	-0.48	-0.41	-0.28
O1 O2	-4.43	-1.00	-0.56	-0.32

Delta (1.0 - 3.5 Hz)

Theta (4.0 - 7.5 Hz)

Alpha (8.0 - 12.0 Hz)

Beta (12.5 - 25.0 Hz)



FFT Coherence

Intrahemispheric: LEFT

	DELTA	THETA	ALPHA	BETA
FP1 F7	66.82	69.02	77.43	36.21
FP1 F3	71.36	73.80	89.12	71.64
FP1 T3	20.31	19.36	29.80	12.03
FP1 C3	38.35	44.36	64.82	36.38
FP1 T5	8.27	2.10	3.63	0.89
FP1 P3	17.38	15.64	15.73	5.62
FP1 O1	5.62	0.82	10.52	0.56
F7 F3	59.36	65.35	77.17	35.33
F7 T3	40.36	43.62	45.85	11.38
F7 C3	46.67	57.01	67.85	21.41
F7 T5	12.54	7.19	4.09	1.72
F7 P3	18.92	21.62	19.70	4.83
F7 O1	4.04	1.47	6.97	0.33
F3 T3	29.40	30.43	38.87	20.48
F3 C3	66.12	72.78	81.41	65.08
F3 T5	19.96	7.07	4.16	2.94
F3 P3	35.88	31.06	26.05	14.06
F3 O1	14.36	3.74	6.88	0.33
T3 C3	48.45	55.57	63.30	39.09
T3 T5	40.18	47.72	29.81	34.36
T3 P3	38.80	45.92	46.82	32.85
T3 O1	15.27	16.84	4.09	7.06
C3 T5	43.85	28.09	14.97	22.12
C3 P3	59.61	61.16	55.93	49.99
C3 O1	26.65	16.59	3.26	6.10
T5 P3	67.23	59.55	56.59	65.68
T5 O1	64.03	65.15	62.14	62.75
P3 O1	63.14	55.22	34.02	46.19

Intrahemispheric: RIGHT

	DELTA	THETA	ALPHA	BETA
FP2 F4	65.04	76.66	84.24	52.26
FP2 F8	57.42	62.36	70.23	41.41
FP2 C4	33.46	40.30	55.04	31.45
FP2 T4	27.67	23.28	16.52	5.71
FP2 P4	14.70	17.73	7.28	4.11
FP2 T6	6.34	3.63	10.76	0.23
FP2 O2	5.59	1.28	12.06	0.50
F4 F8	53.69	61.95	70.88	30.36
F4 C4	64.65	63.89	70.32	41.22
F4 T4	38.52	30.29	23.36	6.38
F4 P4	32.40	31.10	14.11	7.45
F4 T6	20.83	8.50	7.92	0.36
F4 O2	18.35	4.48	7.01	0.05
F8 C4	33.32	43.85	61.37	31.08
F8 T4	42.71	48.27	35.92	8.59
F8 P4	14.74	19.65	14.32	6.71
F8 T6	5.70	5.56	6.40	1.49
F8 O2	2.77	0.57	6.43	0.04
C4 T4	42.77	44.30	47.65	21.91
C4 P4	50.31	58.82	46.58	49.48
C4 T6	25.73	21.10	13.76	16.08
C4 O2	23.15	13.32	3.03	5.70
T4 P4	36.91	36.53	39.19	24.20
T4 T6	9.50	17.96	33.28	26.66
T4 O2	7.71	4.37	6.47	4.31
P4 T6	15.10	36.36	50.27	55.89
P4 O2	24.82	41.30	43.00	45.84
T6 O2	72.05	54.92	51.65	50.31

Interhemispheric: HOMOLOGOUS PAIRS

	DELTA	THETA	ALPHA	BETA
FP1 FP2	73.94	67.82	83.16	59.15
F3 F4	61.05	60.21	70.85	41.60
C3 C4	41.22	34.34	33.41	22.29
P3 P4	55.67	47.51	19.57	30.47

	DELTA	THETA	ALPHA	BETA
F7 F8	7.93	10.57	25.06	4.85
T3 T4	1.75	0.99	2.47	0.49
T5 T6	17.99	9.81	1.42	1.93
O1 O2	27.23	53.88	51.39	51.40

Z Scored FFT Coherence

Intrahemispheric: LEFT

	DELTA	THETA	ALPHA	BETA
FP1 F7	0.56	0.38	0.17	-0.94
FP1 F3	0.67	0.33	0.84	0.66
FP1 T3	-0.28	-0.23	0.36	0.20
FP1 C3	0.58	0.51	1.36	0.97
FP1 T5	0.54	-0.39	-0.70	-0.68
FP1 P3	0.74	0.34	0.63	0.11
FP1 O1	0.47	-0.79	-0.12	-0.71
F7 F3	0.09	-0.01	-0.07	-0.88
F7 T3	-0.81	-0.65	-0.26	-1.24
F7 C3	0.75	0.97	1.07	-0.68
F7 T5	0.39	-0.06	-0.73	-0.73
F7 P3	0.61	0.49	0.68	-0.47
F7 O1	0.08	-0.71	-0.19	-0.89
F3 T3	-0.96	-0.52	-0.19	-0.04
F3 C3	-0.05	0.35	1.04	0.76
F3 T5	0.19	-0.27	-0.69	-0.46
F3 P3	0.22	0.16	0.68	-0.01
F3 O1	0.31	-0.39	-0.13	-1.22
T3 C3	-0.50	-0.00	0.10	0.12
T3 T5	-0.09	0.52	-0.15	0.41
T3 P3	0.06	0.37	0.54	0.38
T3 O1	-0.18	0.18	-1.35	-0.36
C3 T5	-0.02	0.03	-0.85	0.19
C3 P3	-0.87	-0.36	0.09	-0.26
C3 O1	-0.49	-0.38	-1.84	-1.03
T5 P3	-0.04	0.07	-0.38	0.75
T5 O1	-0.44	0.03	-0.87	0.39
P3 O1	-0.44	-0.51	-2.06	-0.74

Intrahemispheric: RIGHT

	DELTA	THETA	ALPHA	BETA
FP2 F4	0.11	0.42	0.29	-0.40
FP2 F8	-0.11	-0.18	-0.25	-0.54
FP2 C4	0.11	0.04	0.96	0.56
FP2 T4	0.06	-0.23	-0.50	-0.66
FP2 P4	0.39	0.47	-0.25	-0.12
FP2 T6	-0.14	-0.29	-0.03	-1.15
FP2 O2	0.23	-0.51	-0.04	-0.85
F4 F8	-0.67	-0.44	-0.37	-1.07
F4 C4	-0.61	-1.01	0.46	-1.06
F4 T4	-0.64	-0.71	-0.91	-1.23
F4 P4	0.01	0.12	-0.15	-0.68
F4 T6	0.09	-0.30	-0.19	-1.22
F4 O2	0.50	-0.32	-0.17	-1.19
F8 C4	-0.46	-0.39	0.82	-0.05
F8 T4	-0.52	-0.30	-0.62	-1.45
F8 P4	0.14	0.21	0.23	-0.18
F8 T6	-0.53	-0.50	-0.36	-0.56
F8 O2	-0.28	-0.86	-0.28	-1.02
C4 T4	-1.11	-0.78	-0.80	-0.54
C4 P4	-1.37	-0.50	-0.28	-0.14
C4 T6	-1.22	-0.54	-0.66	-0.31
C4 O2	-0.80	-0.88	-1.29	-0.98
T4 P4	-0.16	-0.29	0.13	0.05
T4 T6	-2.38	-1.24	0.11	0.20
T4 O2	-0.95	-1.17	-0.65	-0.64
P4 T6	-5.32	-1.67	-0.56	0.17
P4 O2	-4.35	-1.74	-0.82	-0.46
T6 O2	0.39	-0.50	-1.73	-0.36

Interhemispheric: HOMOLOGOUS PAIRS

	DELTA	THETA	ALPHA	BETA
FP1 FP2	-0.00	-1.20	-0.35	-0.33
F3 F4	-0.68	-1.05	-0.38	-0.48
C3 C4	-2.52	-2.51	-0.67	-0.59
P3 P4	-0.61	-0.38	-1.77	-0.16

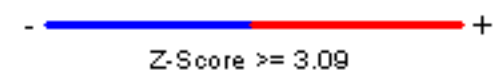
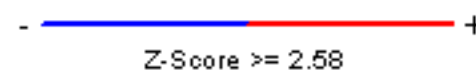
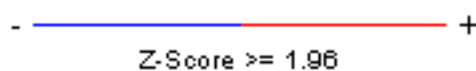
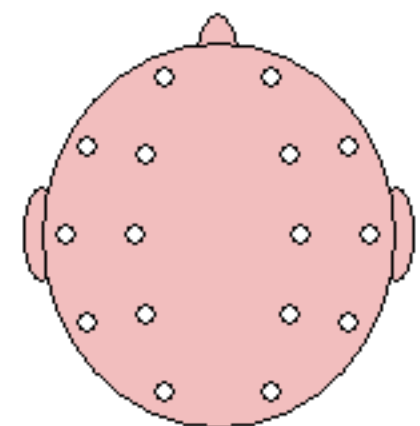
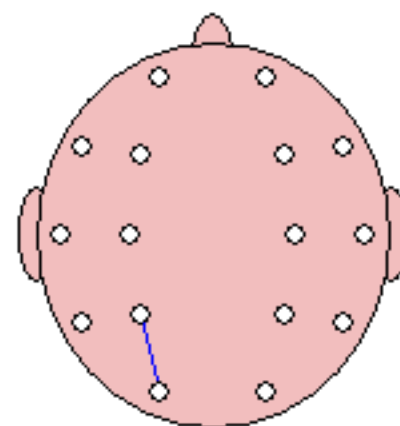
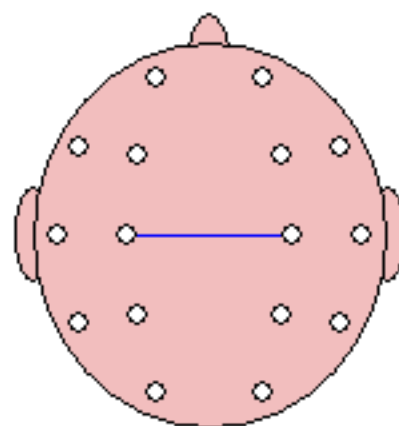
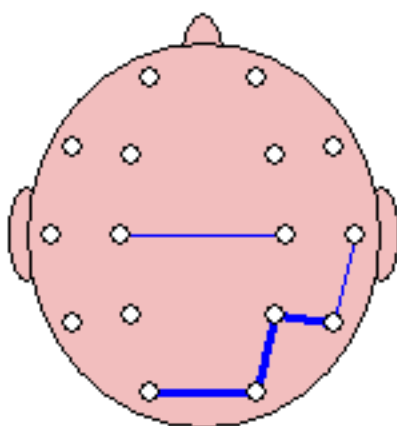
	DELTA	THETA	ALPHA	BETA
F7 F8	-0.52	-0.57	-0.31	-0.70
T3 T4	-1.14	-0.70	-0.50	-0.57
T5 T6	-0.63	-0.09	-1.44	-0.63
O1 O2	-3.84	-0.82	-0.71	0.25

Delta (1.0 - 3.5 Hz)

Theta (4.0 - 7.5 Hz)

Alpha (8.0 - 12.0 Hz)

Beta (12.5 - 25.0 Hz)



FFT Phase Lag (Deg)

Intrahemispheric: LEFT

	DELTA	THETA	ALPHA	BETA
FP1 F7	-0.26	1.27	-0.23	-0.33
FP1 F3	-2.57	1.21	0.18	-0.98
FP1 T3	-4.63	2.29	-4.95	-5.02
FP1 C3	-2.90	1.97	-1.13	-4.27
FP1 T5	-1.26	14.49	74.88	-63.99
FP1 P3	-4.57	2.64	-12.76	-15.58
FP1 O1	-3.88	7.83	18.19	36.95
F7 F3	-2.23	-0.10	0.30	0.15
F7 T3	1.14	-0.61	-4.47	-0.44
F7 C3	-0.42	0.44	-0.62	-1.79
F7 T5	6.70	0.94	-68.51	-37.77
F7 P3	-2.84	-1.52	-9.50	-11.79
F7 O1	2.99	-2.02	23.98	75.34
F3 T3	-3.94	-1.53	-5.22	-5.15
F3 C3	0.65	0.27	-1.09	-1.91
F3 T5	2.84	0.15	-76.35	-34.89
F3 P3	0.14	-2.02	-10.84	-9.53
F3 O1	0.39	1.06	27.00	83.42
T3 C3	1.35	2.29	3.09	3.31
T3 T5	1.87	-0.28	-18.07	-5.34
T3 P3	5.79	0.04	-4.93	0.87
T3 O1	13.15	-2.75	-65.17	-13.82
C3 T5	1.30	-2.18	-32.49	-12.98
C3 P3	0.13	-2.08	-7.91	-3.93
C3 O1	1.32	-2.09	82.93	-16.38
T5 P3	1.09	-0.02	5.37	4.01
T5 O1	1.65	-1.88	-17.35	-5.87
P3 O1	1.32	-0.95	-19.99	-4.72

Intrahemispheric: RIGHT

	DELTA	THETA	ALPHA	BETA
FP2 F4	0.95	1.65	-1.95	-0.34
FP2 F8	-1.50	1.03	-2.19	0.57
FP2 C4	2.07	3.05	-7.53	-3.77
FP2 T4	-9.54	0.40	-20.43	-6.00
FP2 P4	-1.96	2.00	-35.53	-12.28
FP2 T6	40.50	20.48	46.94	69.21
FP2 O2	29.92	31.68	5.94	2.49
F4 F8	-1.05	1.15	-0.28	-0.03
F4 C4	1.11	1.45	-4.87	-1.89
F4 T4	-9.90	-0.56	-16.25	-6.61
F4 P4	0.27	0.37	-24.95	-6.22
F4 T6	26.35	12.01	67.59	-46.57
F4 O2	19.41	17.98	11.20	-1.44
F8 C4	4.00	-0.16	-4.67	-1.61
F8 T4	-4.77	0.42	-11.42	5.56
F8 P4	2.23	-0.50	-27.11	-7.11
F8 T6	26.01	11.83	86.45	-12.73
F8 O2	26.35	27.04	22.07	-89.02
C4 T4	-8.80	-2.04	-7.54	-4.37
C4 P4	0.01	-1.39	-15.41	-3.31
C4 T6	19.81	4.76	-51.42	-9.17
C4 O2	17.86	5.53	83.24	-11.01
T4 P4	4.56	1.28	-10.96	0.39
T4 T6	40.05	8.62	-21.17	-1.97
T4 O2	39.43	12.16	-60.46	-12.63
P4 T6	15.66	1.01	-5.94	0.05
P4 O2	12.55	1.34	-17.53	-7.03
T6 O2	-3.64	1.79	-20.64	-13.81

Interhemispheric: HOMOLOGOUS PAIRS

	DELTA	THETA	ALPHA	BETA
FP1 FP2	1.05	-0.09	-0.16	-0.05
F3 F4	5.40	0.90	-1.40	0.44
C3 C4	2.62	2.39	-4.64	2.21
P3 P4	-1.08	-0.07	-2.66	4.69

	DELTA	THETA	ALPHA	BETA
F7 F8	-0.97	-0.67	-2.96	-0.47
T3 T4	-8.25	17.09	15.54	9.80
T5 T6	2.70	-12.43	-20.87	2.07
O1 O2	6.49	-2.10	-9.12	-1.98

Z Scored FFT Phase Lag

Intrahemispheric: LEFT

	DELTA	THETA	ALPHA	BETA
FP1 F7	0.47	0.22	0.12	-0.56
FP1 F3	0.39	0.10	0.70	-0.14
FP1 T3	0.49	0.24	0.17	-0.03
FP1 C3	0.38	-0.14	0.41	-0.16
FP1 T5	0.22	0.03	1.41	-1.93
FP1 P3	0.13	0.05	-0.18	-0.65
FP1 O1	0.10	0.13	0.39	0.92
F7 F3	-0.60	-0.31	0.60	0.64
F7 T3	0.42	0.32	0.15	0.43
F7 C3	-0.15	-0.47	0.41	0.30
F7 T5	0.39	-0.03	-1.87	-0.88
F7 P3	-0.39	-0.02	-0.03	-0.04
F7 O1	-0.12	-0.24	0.31	2.27
F3 T3	-0.04	0.45	-0.17	-0.35
F3 C3	0.21	-0.57	0.21	-0.55
F3 T5	0.62	0.01	-1.43	-0.69
F3 P3	0.10	-0.39	-0.15	-0.22
F3 O1	-0.01	0.02	0.30	2.51
T3 C3	-0.20	-0.44	0.18	-0.06
T3 T5	-0.33	-0.04	-0.27	-0.28
T3 P3	-0.32	-0.40	0.10	0.39
T3 O1	0.47	-0.60	-1.54	-0.26
C3 T5	0.67	0.21	-0.44	-0.20
C3 P3	-0.08	-0.30	0.21	0.05
C3 O1	0.20	-0.37	2.30	-0.58
T5 P3	-0.16	-0.09	0.21	0.72
T5 O1	0.18	-0.46	-1.61	-0.02
P3 O1	0.17	-0.43	-1.31	-0.49

Intrahemispheric: RIGHT

	DELTA	THETA	ALPHA	BETA
FP2 F4	0.04	-1.00	-0.58	-1.20
FP2 F8	-0.34	0.11	-0.23	0.17
FP2 C4	0.22	-0.34	-0.01	-0.40
FP2 T4	-0.70	0.13	-0.56	-0.14
FP2 P4	-0.28	-0.16	-0.71	-0.41
FP2 T6	1.52	0.52	0.66	1.46
FP2 O2	0.87	0.49	-0.29	-0.07
F4 F8	0.07	1.53	0.56	0.52
F4 C4	0.37	0.21	0.13	0.51
F4 T4	-0.74	0.76	-0.45	-0.08
F4 P4	0.24	0.03	-0.43	0.26
F4 T6	1.37	0.65	1.49	-0.93
F4 O2	0.60	0.36	0.09	0.07
F8 C4	0.35	-1.18	-0.06	-0.37
F8 T4	-0.74	0.21	-0.56	0.23
F8 P4	0.05	-0.42	-0.57	-0.27
F8 T6	1.09	0.36	1.47	-0.35
F8 O2	0.54	0.67	0.27	-2.87
C4 T4	-1.19	0.36	-0.65	-0.08
C4 P4	0.12	-0.00	-0.34	-0.11
C4 T6	2.74	0.70	-1.03	0.03
C4 O2	1.74	0.28	2.51	-0.44
T4 P4	-0.08	-0.08	-0.14	0.10
T4 T6	2.78	0.95	-0.23	-0.10
T4 O2	1.63	0.27	-1.22	-0.84
P4 T6	3.76	0.27	-0.31	0.25
P4 O2	2.97	-0.13	-0.85	-0.56
T6 O2	-1.08	0.23	-1.94	-2.35

Interhemispheric: HOMOLOGOUS PAIRS

	DELTA	THETA	ALPHA	BETA
FP1 FP2	0.57	0.41	0.28	0.12
F3 F4	1.43	-0.14	-1.37	-0.95
C3 C4	0.55	1.01	-0.42	0.37
P3 P4	-0.26	0.14	0.04	0.46

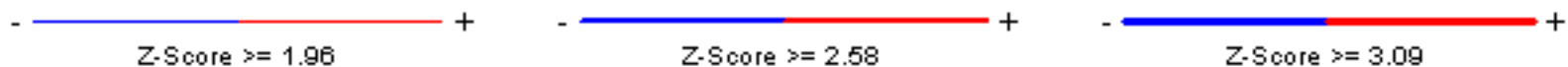
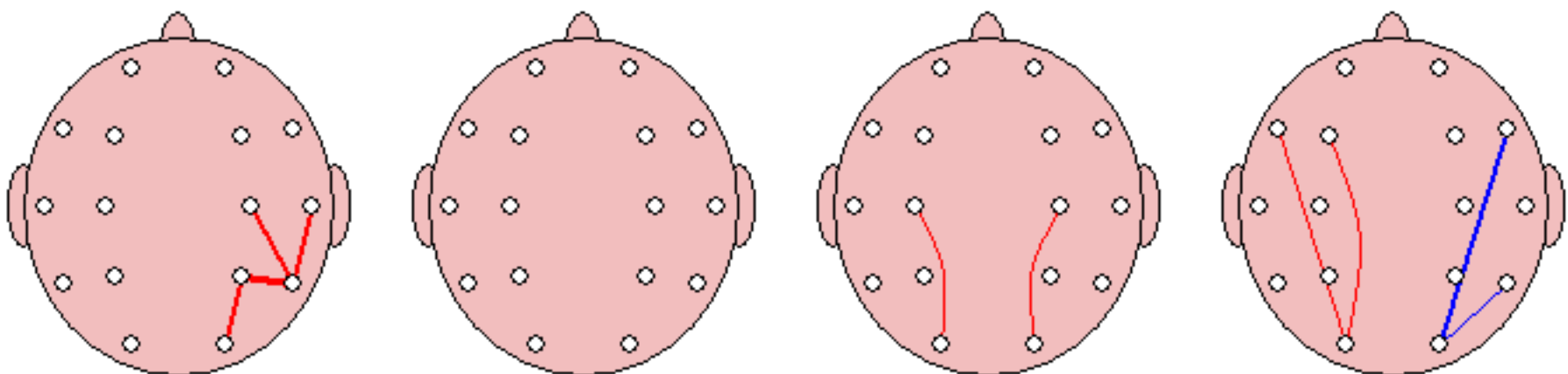
	DELTA	THETA	ALPHA	BETA
F7 F8	-0.23	0.36	-0.20	0.21
T3 T4	-0.44	0.37	0.33	0.38
T5 T6	-0.01	-0.65	-0.28	0.15
O1 O2	1.92	-0.57	-0.94	-0.25

Delta (1.0 - 3.5 Hz)

Theta (4.0 - 7.5 Hz)

Alpha (8.0 - 12.0 Hz)

Beta (12.5 - 25.0 Hz)

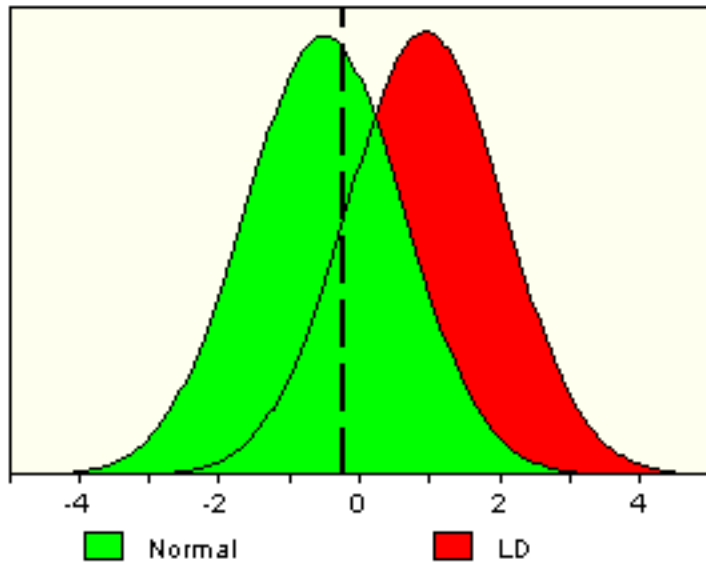


Learning Disability Discriminant Analysis*

LD DISCRIMINANT SCORE = -0.26

LD PROBABILITY INDEX = 55.0%

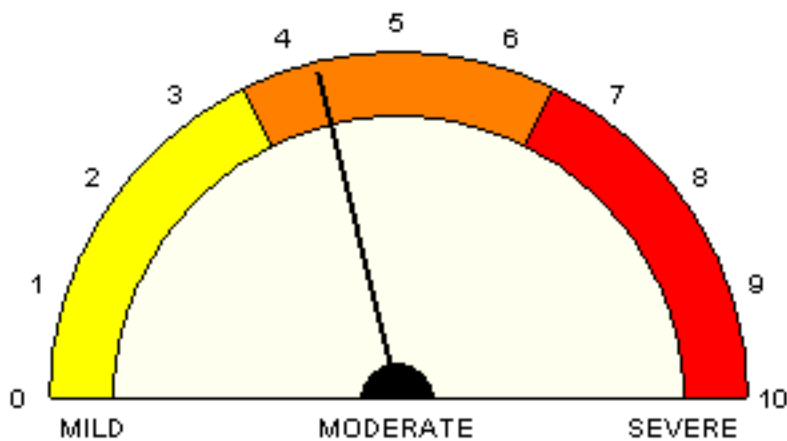
The Learning Disability Probability Index is the subject's probability of membership in the Learning Disability (LD) population.



			RAW	Z
F8	RATIO	T/B	0.52	-1.73
P3	AP	Theta	3.60	-1.75
Cz-C4	AMP	Theta	37.72	0.31
F7-T6	AMP	Alpha	-91.42	-0.04
T5-O2	COH	Theta	28.87	0.04
F3-Fz	COH	Alpha	91.71	0.36
FP1-T5	PHA	Beta	-63.99	-1.93
T4-T6	PHA	Delta	40.05	2.78
F8-T3	PHA	Delta	4.93	0.34
T4-Pz	PHA	Theta	0.69	-1.16
FP1-Pz	PHA	Delta	-8.68	-0.13
F8-Pz	PHA	Beta	-5.40	-0.59
C3-O2	PHA	Alpha	6.40	0.33
FP1-F4	PHA	Alpha	-1.50	-0.10

LD SEVERITY INDEX = 4.22

This severity score places the patient in the MODERATE range of severity.



The LD Severity Index is an estimate of the neurological severity of Learning Disability.

***Statement of Indications of Use:**

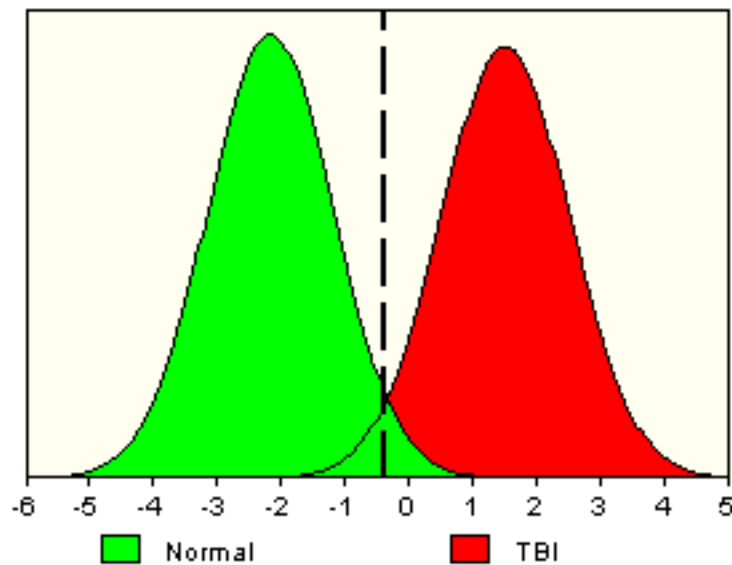
The Discriminant Analysis and Severity Index are to be used by experienced and qualified professionals for the post-hoc statistical evaluation of the human electroencephalogram (EEG). The Discriminant Analysis and Severity Index are to be viewed as an adjunct to the evaluation of the patient, and they do not serve as a primary basis for a diagnosis. Warning: Inclusion criteria of no history of traumatic brain injury and age between 6 years and adulthood must be adhered to.

Traumatic Brain Injury Discriminant Analysis*

TBI DISCRIMINANT SCORE = -0.43

TBI PROBABILITY INDEX = Not Significant

The TBI Probability Index is the subject's probability of membership in the mild traumatic brain injury population. (see Thatcher et al, EEG and Clin. Neurophysiol., 73: 93-106, 1989.)

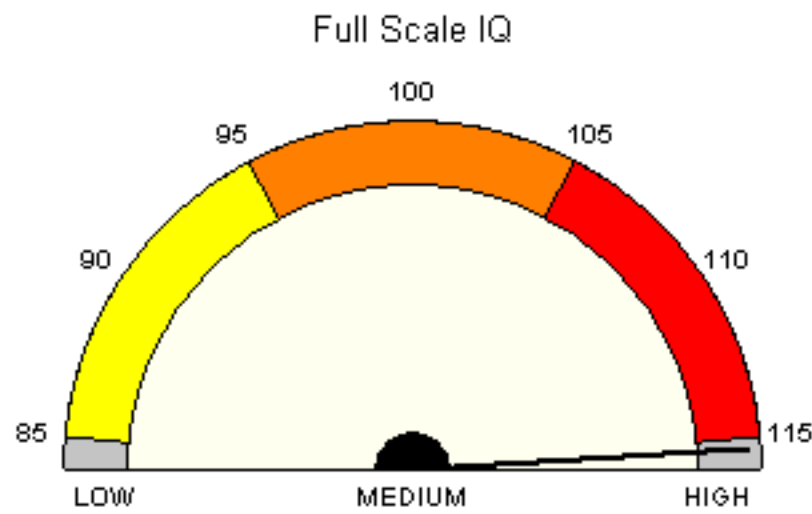


F3-F7	AMP	Theta	FP1-F3	PHA	Theta
P3-Cz	AMP	Beta	P3-T5	PHA	Alpha
P3-T5	AMP	Beta	C4-Cz	PHA	Theta
F7-Pz	AMP	Beta 3	P4-O2	PHA	Delta
C4-Fz	AMP	Theta	F8-T4	PHA	Beta
T5-T6	AMP	Beta	FP2-Fz	PHA	H. Beta
T3-T4	AMP	Beta 1	FP2-F4	PHA	Beta 2
F4-T3	AMP	Beta	T5-T6	PHA	Beta
FP1-T5	COH	Beta	P3-P4	PHA	Delta
F3-O1	COH	Delta	F3-C4	PHA	Alpha
C3-Cz	COH	Delta	O2-F7	PHA	Theta
F8-T4	COH	Beta	T3	AP	Beta
F4-Cz	COH	Beta	O2	AP	Delta
FP2-F4	COH	Delta	F8	RATIO	A/B
F7-F8	COH	Beta	Pz	RATIO	D/T
F3-F4	COH	Theta	C3	PK FR	Beta 3
C4-T5	COH	Delta	C4	PK FR	H. Beta
F3-Fz	PHA	Beta 3	T6	PK FR	Theta
O1-Fz	PHA	Beta 3			

***Statement of Indications of Use:**

The Discriminant Analysis and Severity Index are to be used by experienced and qualified professionals for the post-hoc statistical evaluation of the human electroencephalogram (EEG). The Discriminant Analysis and Severity Index are to be viewed as an adjunct to the evaluation of the patient, and they do not serve as a primary basis for a diagnosis. Warning: Inclusion criteria of a history of traumatic brain injury and greater than 13 years of age must be adhered to.

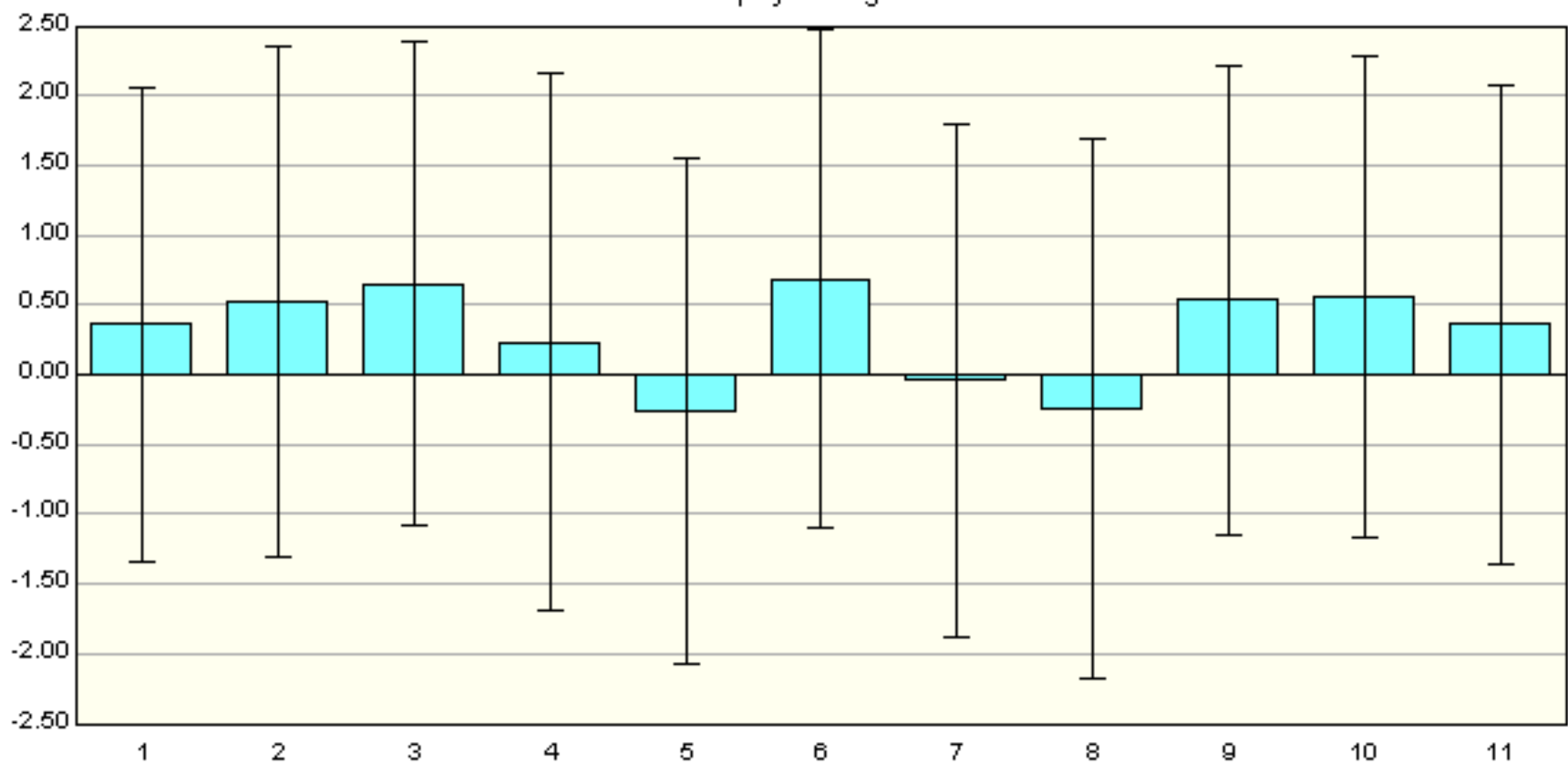
Predicted Neuropsychological Scores



Predicted Cognitive Performance

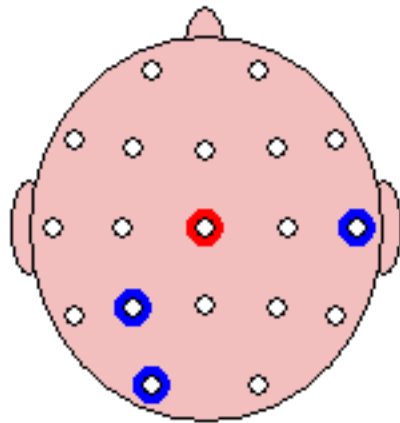
Neuropsychological Tests	Scaled Score	Min SS	Max SS	Z Score	Min Z	Max Z
1 Information	12.20	6.63	17.78	0.36	-1.33	2.06
2 Mathematics	12.36	6.60	18.13	0.52	-1.30	2.35
3 Vocabulary	13.74	7.80	19.69	0.65	-1.08	2.38
4 Digit Span	10.82	4.85	16.79	0.23	-1.69	2.16
5 Picture Completion	10.33	5.06	15.60	-0.26	-2.07	1.55
6 Block Design	13.23	7.06	19.40	0.69	-1.10	2.48
7 Coding	10.24	4.40	16.08	-0.04	-1.88	1.80
8 Mazes	10.64	4.41	16.87	-0.24	-2.18	1.70
9 Full IQ	115.32	88.71	141.92	0.54	-1.14	2.22
10 Verbal IQ	115.15	86.11	144.20	0.56	-1.17	2.28
11 Performance IQ	112.02	85.96	138.08	0.36	-1.36	2.08

Predicted Z-Score Achievement and Neuropsychological Measures with 95% Confidence Intervals



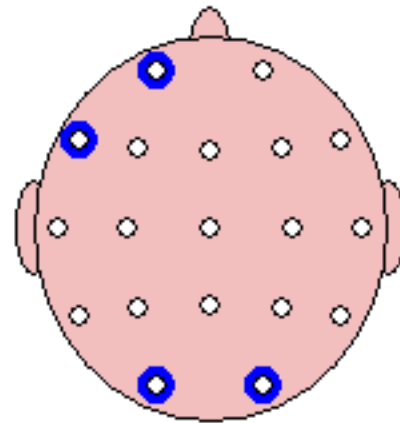
Predicted Full IQ

Absolute Power



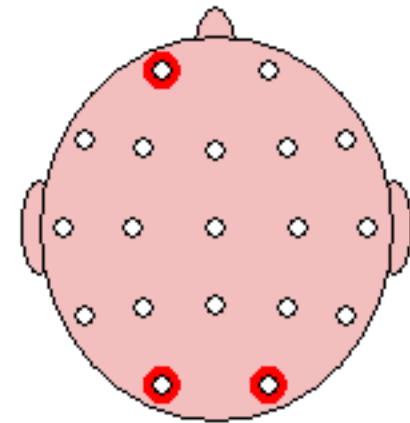
< Ave IQ ——— >= Ave IQ

Relative Power



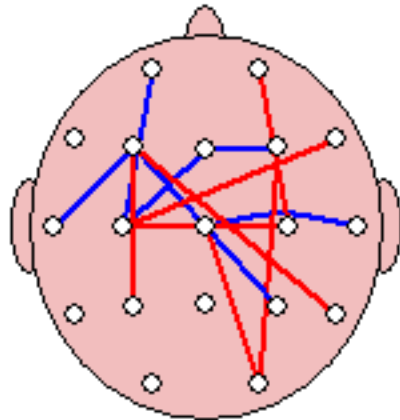
< Ave IQ ——— >= Ave IQ

Power Ratio



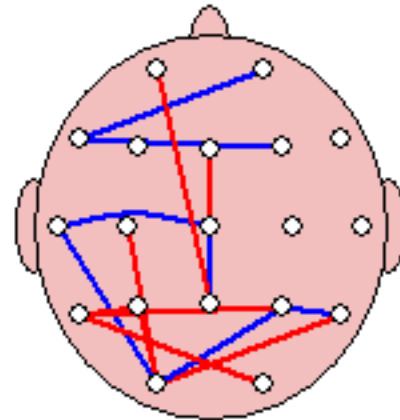
< Ave IQ ——— >= Ave IQ

Amplitude Asymmetry



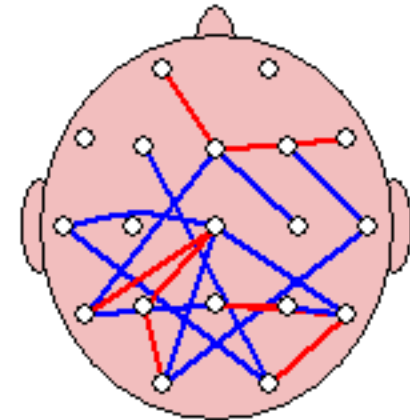
< Ave IQ ——— >= Ave IQ

Coherence



< Ave IQ ——— >= Ave IQ

Phase Difference



< Ave IQ ——— >= Ave IQ